



INSPIRATIONAL DOORS.  
**Undeniable value.**

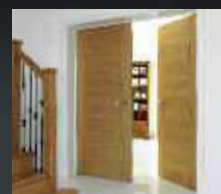
Door Collection  
**2015**

[www.jbkind.com](http://www.jbkind.com)

# Contents

At a Glance Guide	4
Door Showroom	4
Fire Door Information	5
FSC® Certified	5
Helping You Choose Your JB Kind Doors	6-7
Style idea: Do more with our doors	8-9
<b>New designs</b> Eco Colours	10-13
<b>New designs</b> Symmetry	14-17
Walnut Flush	18-21
<b>New range</b> Nuance	22-23
Royale Modern	24-27
Royale Traditional	28-29
Brisa	30-31
Roma	32-35
Elements	36-37
<b>New design</b> River Oak Modern	38-39
<b>New design</b> River Oak Cottage	40-43
River Oak Traditional	44-45
Montana	46-47
Simply Oak	48-49
Gallery	50-51
Inspiration	52-53
Zodiac Flush	54-55
Empire	56-57
Limelight	58-61
<b>New designs</b> Calypso	62-65
<b>New designs</b> Moulded Panel	66-69
<b>New range</b> Bi-folds	70-73
<b>New</b> Pocket Door Systems	74
<b>New</b> Door Furniture	75
Internal Accessories	76
External Accessories	77
Glossary of Terms	77
Therm-L Exterior	78-81
Essential Door Care	82
Bespoke Door Options	83

Our dedication to meeting the highest standards for our customers is illustrated by our continuous achievement of the UK quality award, the ISO9001 accreditation. For information on our service standards and product promises, please refer to our Customer Charter which available online at [jbkind.com](http://jbkind.com).



Front cover:  
Brisa Mistral Oak,  
see page 31

Join us online JBKindDoors JBKindDoors JBKindDoors

# Welcome to our 2015 Collection

Take a moment to peruse our brochure and you'll be delighted with what you find. For a start, we've introduced 37 new designs, which means we now offer 23 door ranges and more than 200 doors – so we really do have something for every style, budget and specification!

From the stunning new painted door range Nuance and the new finishes we've introduced for the Symmetry Axis, to being bold with a choice of 14 brilliant new Bi-folds and by popular demand our inspired ironmongery, the 2015 Collection is the most distinct to date.

Consider the versatility of our doors in our Style ideas section on pages 8&9 to give your house an undeniable design edge; and check out pages 6&7 for tips on how to choose your JB Kind doors and where to buy them.

If an individual look is what you're after then why not talk to us about our bespoke options service? With different sizes, colours and veneers, find out more about specifically-tailored doors that really will add the Wow factor to your project.

## Architects, Specifiers and Designers

Our dynamic door designs offer undeniable value as well as compliance with a wide range of UK and European industry standards. From fire protection and thermal insulation to renewable resources and disabled access, you can rely on JB Kind to provide the quality standards you need. We have recognised third party accreditation from schemes such as BWF-CERTIFIRE and FSC® chain of custody.

If you have any questions or need some expert advice, don't hesitate to call us on 01283 554197.





# At a Glance Guide

Take a look at the table below to find out which of our door ranges have the features that you desire. From finishes to fire doors, you can narrow down your choices with this super summary.

Range	Door Finish			Fire Doors (FD30)			Door Construction For non FD30 doors			Metric Sizes*	Bespoke Options	FSC®
	Pre-finished	Unfinished	Primed	Solid	Glazed	BWF-CERTIFIRE	Solid Core	Semi-solid Core	Standard Core			
Eco Colours	✓			✓	●				✓		✓	✓
Symmetry	✓		✓	✓			✓					✓
Walnut Flush	✓			✓	●	✓		✓		✓	✓	✓
Nuance	✓			✓	●	✓			✓		✓	
Royale Modern	✓	●		✓	●		✓				✓	✓
Royale Traditional	✓	✓		✓	✓	✓	✓			✓	✓	
Brisa	✓			✓				✓		✓		
Roma	✓			✓	✓	✓		✓			✓	
Elements	✓			✓	●	✓	✓				✓	
Elements - Agua only	✓			✓	●	✓			✓		✓	
River Oak Modern	✓	●		✓	✓		✓			✓	✓	
River Oak Cottage	✓	✓		✓			✓			✓		
River Oak Traditional	●	✓		✓			✓			✓		
Montana	●	✓		✓			✓			✓		
Simply Oak	✓			✓			✓					
Gallery	✓			✓	●	✓			✓		✓	✓
Inspiration	✓			✓	●				✓		✓	✓
Zodiac Flush	✓			✓	✓		✓					
Empire	✓			✓	●	✓		✓			✓	
Limelight			✓	✓	✓				✓	✓	✓	✓
Calypso			✓	✓			✓					✓
Moulded Panel			✓	✓	✓				✓	✓		✓
Bi-folds	✓	✓	✓				✓	✓	✓			✓
Therm-L Exterior		✓					✓					

✓ available from stock ● can be ordered \*Metric sizes are available to order throughout our ranges

# Fire Door Information



Fire doors are a serious business, and that's why we invest our time, energy and money to ensure that we have one of the most comprehensive, and accredited, collections of fire doors in the UK.

## Certificated Fire Doors



Many of the fire door ranges in this catalogue are certified within the BWF-CERTIFIRE scheme and the products where this applies are endorsed with the logo.

BWF-CERTIFIRE certification validates these products suitable for use as fire doors and provides the means to independently authenticate the quality and performance of the doors to which this applies.

For more information on the BWF-CERTIFIRE scheme, visit [www.jbkind.com](http://www.jbkind.com)

Virtually every JB Kind door range offers a complementary option for use in FD30 situations, and our bespoke service means that you can have FD30 fire doors in alternative designs, special sizes and even with a variety of glazing options. As responsible suppliers of fire resistant doors, we ensure that all of our FD30 (and FD60) doors have been tested in accordance with either the British BS476 pt22 or European EN1634-1:2000 standards.

All of our fire doors have a Fire Test Assessment report which is available upon request and outlines in detail exactly what you can and can't do when fitting any particular door.

All fire doors are glazed with fire-rated glass.

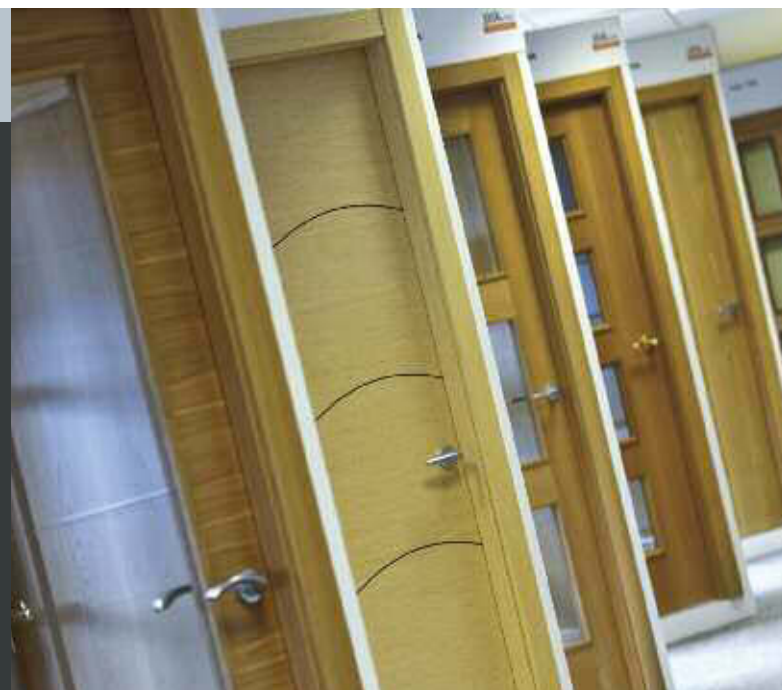
For more information on fire doors, including details on Glazed Fire Doors & Part M (Mobility) visibility requirements, log on to [www.jbkind.com](http://www.jbkind.com) or call **01283 554197**.

## Door Showroom

### Visit JB Kind's Midlands Door Showroom

Located in Swadlincote, Derbyshire, you are invited to touch and feel our products at first hand – we're sure you'll be impressed. With over 70 doors on display, you can view doors from our standard stock ranges, as well as alternative designs that showcase our bespoke service.

Please call **01283 554197** to make an appointment. Alternatively, we have many partners throughout the UK with JB Kind doors on display, so please consult us for the closest to you or visit our online supplier locator.



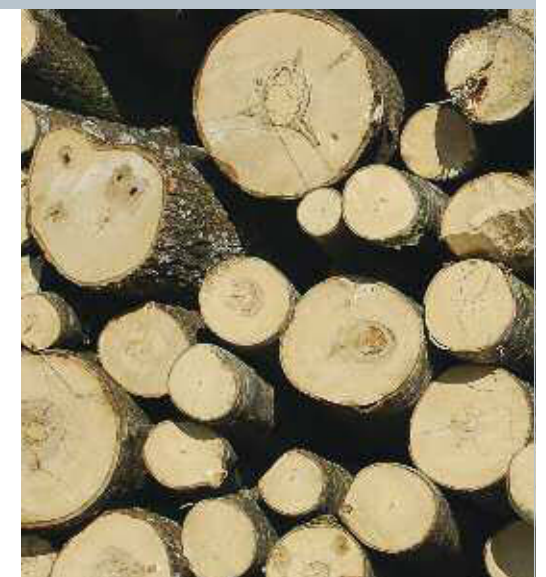
## FSC® Certified



### FSC® Certified chain of custody door supplier

JB Kind is working towards obtaining all its doors from well-managed sources. We hold our own FSC chain of custody certification for certain doors within our collection and are continually working towards increasing this range.

Chain of custody certification ensures that the systems within our business allow us to track the door from the day we buy it, through to the day we deliver it. Wherever you see the FSC® logo, doors within that range have been produced from certified materials and other controlled sources.





# Helping You Choose Your JB Kind Doors

## Door Finish

You can buy your doors pre-finished, unfinished or primed at JB Kind – but which would you prefer? If you want to stamp your own style on your doors by choosing your own paint or varnish, then an unfinished option is for you. If you want to receive your door ready to fit and with no extra work, then you'll need a fully finished version!

Whether you prefer classic veneers such as oak or walnut, contemporary painted or white primed finishes then you've come to the right place.



## Door Styles

Choosing the perfect door style for your home maybe a daunting decision, but with the help of JB Kind you'll find your perfect match. From classic traditional panelled designs to contemporary flush doors that incorporate stunning grooved patterns, or popular shaker panel to rustic cottage styles, you'll find them in our 2015 Door Collection.

Finish off with a stylish handle from the NEW JB Kind, range of handles and latch packs

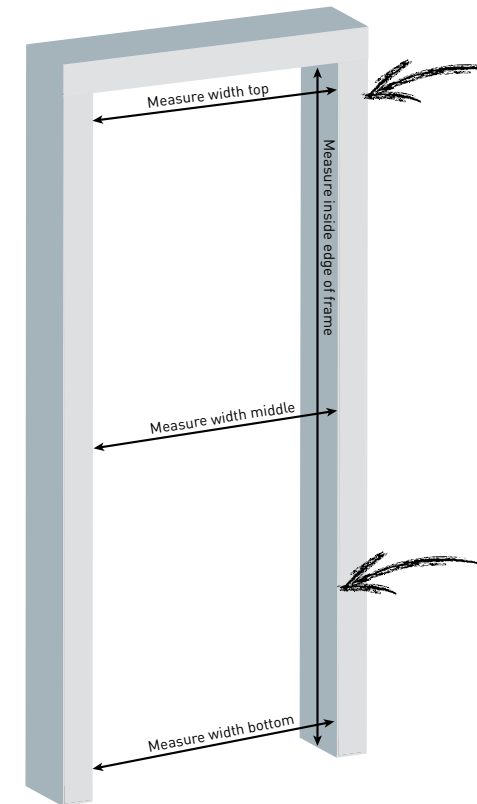
See page 75.



## Measuring up

You don't want to buy an ill-fitting door so to make sure you get the size right, follow our guide:

If you are buying replacement doors, **DO NOT** measure the existing door. You must always base your measurements on the door frame.



**Door width:** Take three measurements inside the door frame - at the top, middle and bottom. The widest measurement determines the width of the door.

**Door height:** Measure the inside of each vertical side of the frame. The longest length determines the height required. Remember to make allowance for any floor covering.

Having gathered your measurements, compare them with the standard sizes available for your chosen door style. Select the most appropriate, remembering that you can plane the edges slightly to reduce the size. If required, please call us for details of the lipping size.



## Size Conversion Chart

Do you still work in feet and inches? If so, our useful conversion chart will help you work out the metric equivalent size for our doors.

HEIGHT & WIDTH		
Metric (mm)	Imperial (inches)	Imperial (feet & inches)
1981 x 457	78" x 18"	6'6" x 1'6"
1981 x 533	78" x 21"	6'6" x 1'9"
1981 x 610	78" x 24"	6'6" x 2'0"
1981 x 686	78" x 27"	6'6" x 2'3"
1981 x 711	78" x 28"	6'6" x 2'4"
1981 x 762	78" x 30"	6'6" x 2'6"
1981 x 838	78" x 33"	6'6" x 2'9"
1981 x 915	78" x 36"	6'6" x 3'0"
1981 x 1067	78" x 42"	6'6" x 3'6"
1981 x 1168	78" x 46"	6'6" x 3'10"
1981 x 1220	78" x 48"	6'6" x 4'0"
1981 x 1372	78" x 54"	6'6" x 4'6"
1981 x 1524	78" x 60"	6'6" x 5'0"
2032 x 813	80" x 32"	6'8" x 2'8"
2134 x 915	84" x 36"	7'0" x 3'0"
2040 x 526	80¼" x 20½"	6'8¼" x 1'8½"
2040 x 626	80¼" x 24½"	6'8¼" x 2'0½"
2040 x 726	80¼" x 28½"	6'8¼" x 2'4½"
2040 x 826	80¼" x 32½"	6'8¼" x 2'8½"
2040 x 926	80¼" x 36½"	6'8¼" x 3'0½"

If you have a non-standard size requirement, call us, as bespoke sizes can be ordered for some of our door ranges.

## Where to buy our doors

Our doors can be ordered from Builders Merchants and Door Retailer partners across the UK and buying your JB Kind doors is now even easier with our new online **Supplier Locator**. Just go to [www.jbkind.com](http://www.jbkind.com) and put in your postcode to find the closest retailer to you – we also tell you which outlets have JB Kind door displays so you can take the time to go and experience just how fabulous our doors really are!

If you already know exactly what you want and you like the ease of ordering online, then just pop onto the website and check out the links to our approved **Online Partners** - then you're just a click away from receiving your dream doors.

Sometimes you'll need advice and we are always here to help. Just give us a call on **01283 554 197** or email [info@jbkind.com](mailto:info@jbkind.com).





# Style idea | Do more with our doors

When you're deciding on your home's interior design and the doors that will work with your new look, take some time to consider the options available and you might be surprised what a difference a distinctive door can make to the look and feel of a room.



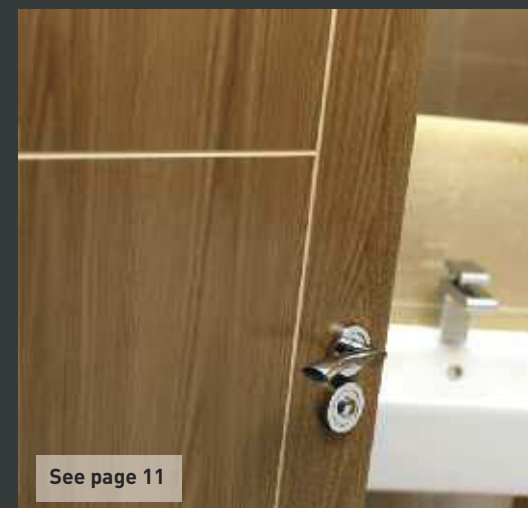
See page 31

## Add some variety

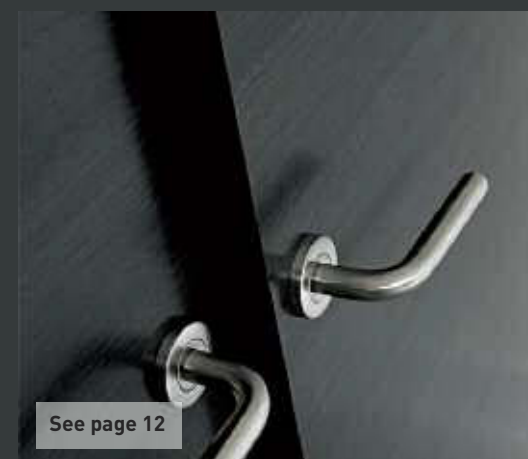
Our doors are superbly versatile and perfect throughout your home, and by being creative with their placement and using them as wardrobe, sliding or bi-fold doors, you can make an individual design statement too. Virtually all of our ranges can be used for pocket sliding doors so take your pick from our classic, contemporary and innovative designs and find what works for your home.



See page 71



See page 11



See page 12



See pages 41 & 47

## Mix it up

Synchronise your home using complementing door designs or do it differently by creating separate design themes on each storey of your house. Why not use a classic comforting look upstairs and a cutting edge contemporary look downstairs? Or create a stylish mix of contemporary and traditional designs throughout your property and show your appreciation for the old and the new.

## Light up your life

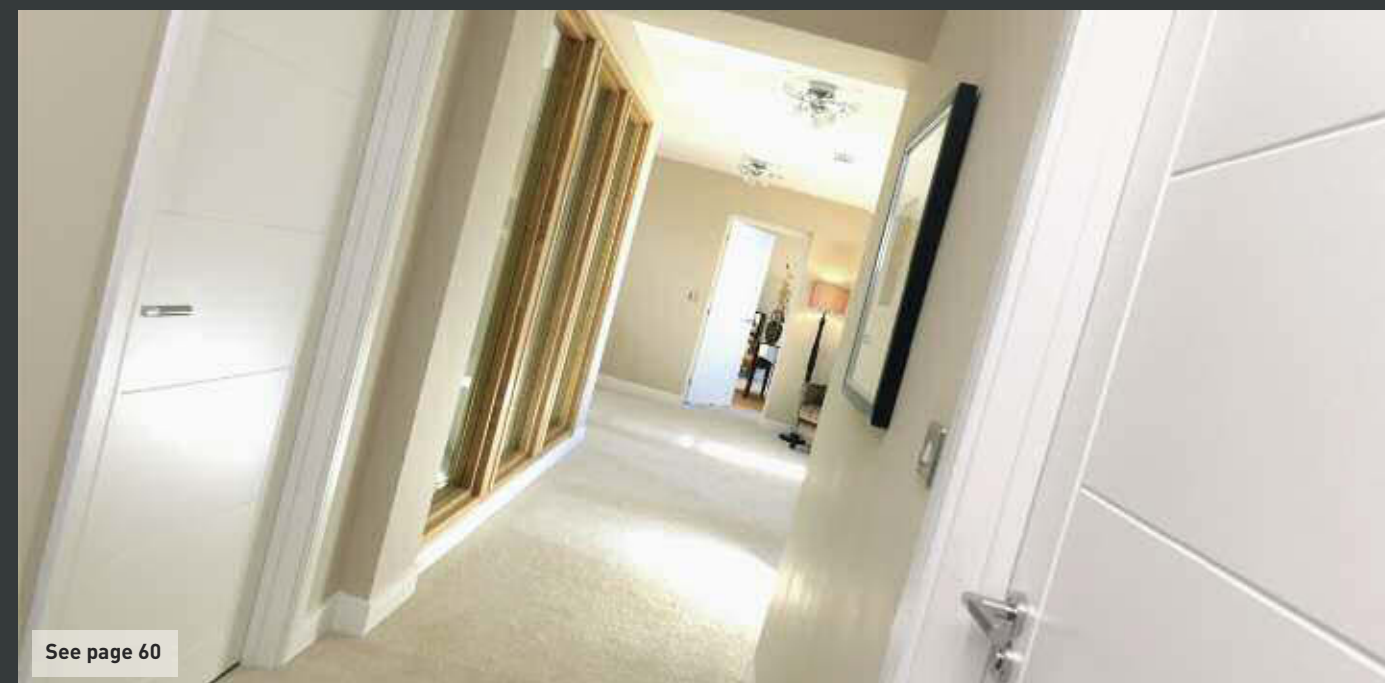
Most of our doors have glazed partners which can brighten up any home. Our ranges offer clear, etched, diamond cut and opaque glass options, so whatever you're looking for and whatever your design style, there will always be a glazed door that works for you.



See page 25



See page 64



See page 60



# Eco Colours

Enhance your home and make a statement with these exclusive colours and designs – the perfect complement for today's neutral design themes.

Eco Colours impressive painting technology creates a stunning range of contemporary flush doors. The flawless timber graining effect offers the benefit of a natural veneer at a fraction of the cost. Plus the superior painted finish offers consistent uniformity, ideal for matching purposes.

Colours depicted are representative only.



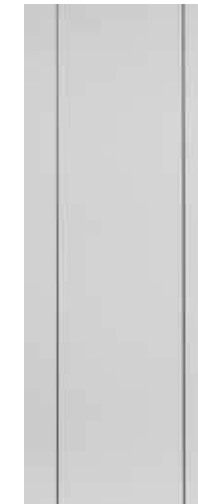
**ECO LINEA/PARELO**  
Satin white



**ECO ARGENTO**  
Ash grey with vertical grain



**ECO MOCHA**  
Soft walnut with vertical grain



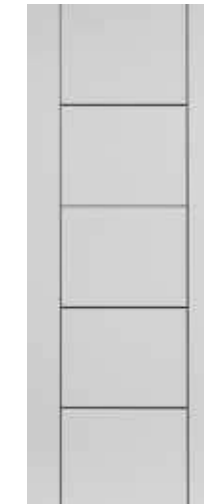
**New ECO PARELO**  
Black grooved

Height / Width / Thickness mm	Product Code
1981 610 35	<b>ECPAR20</b>
1981 686 35	<b>ECPAR23</b>
1981 762 35	<b>ECPAR26</b>
1981 838 35	<b>ECPAR29</b>
<b>PRE-FINISHED FIRE DOORS</b>	
1981 686 45	<b>ECPARHH23</b>
1981 762 45	<b>ECPARHH26</b>
1981 838 45	<b>ECPARHH29</b>



**New ECO PARELO GLAZED**  
Black grooved  
Clear safety glass

Height / Width / Thickness mm	Product Code
1981 686 35	<b>ECPAR23G</b>
1981 762 35	<b>ECPAR26G</b>
1981 838 35	<b>ECPAR29G</b>



**New ECO LINEA**  
Black grooved

Height / Width / Thickness mm	Product Code
1981 610 35	<b>ECLIN20</b>
1981 686 35	<b>ECLIN23</b>
1981 762 35	<b>ECLIN26</b>
1981 838 35	<b>ECLIN29</b>
<b>PRE-FINISHED FIRE DOORS</b>	
1981 686 45	<b>ECLINHH23</b>
1981 762 45	<b>ECLINHH26</b>
1981 838 45	<b>ECLINHH29</b>



**New ECO LINEA GLAZED**  
Black grooved  
Clear safety glass

Height / Width / Thickness mm	Product Code
1981 686 35	<b>ECLIN23G</b>
1981 762 35	<b>ECLIN26G</b>
1981 838 35	<b>ECLIN29G</b>



**ECO ARGENTO**  
Silver grooved

Height / Width / Thickness mm	Product Code
1981 610 35	<b>ECARG20</b>
1981 686 35	<b>ECARG23</b>
1981 762 35	<b>ECARG26</b>
1981 838 35	<b>ECARG29</b>
<b>PRE-FINISHED FIRE DOORS</b>	
1981 686 45	<b>ECARGHH23</b>
1981 762 45	<b>ECARGHH26</b>
1981 838 45	<b>ECARGHH29</b>



**ECO ARGENTO GLAZED**  
Clear safety glass,  
Silver grooved

Height / Width / Thickness mm	Product Code
1981 686 35	<b>ECARG23G</b>
1981 762 35	<b>ECARG26G</b>
1981 838 35	<b>ECARG29G</b>



**ECO MOCHA**  
Ivory grooved

Height / Width / Thickness mm	Product Code
1981 610 35	<b>ECMOC20</b>
1981 686 35	<b>ECMOC23</b>
1981 762 35	<b>ECMOC26</b>
1981 838 35	<b>ECMOC29</b>
<b>PRE-FINISHED FIRE DOORS</b>	
1981 686 45	<b>ECMOCHH23</b>
1981 762 45	<b>ECMOCHH26</b>
1981 838 45	<b>ECMOCHH29</b>



**ECO MOCHA GLAZED**  
Clear safety glass,  
Ivory grooved

Height / Width / Thickness mm	Product Code
1981 686 35	<b>ECMOC23G</b>
1981 762 35	<b>ECMOC26G</b>
1981 838 35	<b>ECMOC29G</b>

**Bespoke Options:**  
Alternative designs, painted finishes and special sizes can be made to order.

Call our Sales team on 01283 554197 to discuss your requirements.

Eco Colours continues overleaf



- New designs for 2015
- Contemporary painted finishes
- Unique to JB Kind with bespoke options
- FD30 fire doors (glazed FD30 available to order)
- FSC® chain of custody certified



**ECO GRIGIO**





ECO ARGENTO



ECO MOCHA

Colours depicted are representative only.



ECO BLANCO  
Satin white



ECO GRIGIO  
Ash grey with  
horizontal grain



ECO WENGE  
Horizontal grain



ECO MIEL  
Honey oak with  
horizontal grain

**Bespoke options:**

Alternative design styles are available in a variety of painted finishes. Flush doors with horizontal or vertical graining, grooved effects and aluminium coloured inlays are just a few options. Special sizes, wardrobe doors and matching frames/architraves can also be made to order.

Call our Sales team on 01283 554197 to discuss your requirements.



ECO BLANCO  
Aluminium coloured inlays

Height / Thickness mm	Width mm	Product Code
1981 610 35		ECBLA20
1981 686 35		ECBLA23
1981 762 35		ECBLA26
1981 838 35		ECBLA29

**PRE-FINISHED**

1981 610 35		ECBLA20
1981 686 35		ECBLA23
1981 762 35		ECBLA26
1981 838 35		ECBLA29

**PRE-FINISHED FIRE DOORS**

1981 686 45		ECBLAHH23
1981 762 45		ECBLAHH26
1981 838 45		ECBLAHH29



ECO BLANCO GLAZED  
Aluminium coloured inlays  
Clear safety glass

Height / Thickness mm	Width mm	Product Code
1981 686 35		ECBLA23G
1981 762 35		ECBLA26G
1981 838 35		ECBLA29G

**PRE-FINISHED**

1981 686 35		ECBLA23G
1981 762 35		ECBLA26G
1981 838 35		ECBLA29G



ECO GRIGIO

Height / Thickness mm	Width mm	Product Code
1981 610 35		ECGRI20
1981 686 35		ECGRI23
1981 762 35		ECGRI26
1981 838 35		ECGRI29

**PRE-FINISHED**

1981 610 35		ECGRI20
1981 686 35		ECGRI23
1981 762 35		ECGRI26
1981 838 35		ECGRI29

**PRE-FINISHED FIRE DOORS**

1981 686 45		ECGRIHH23
1981 762 45		ECGRIHH26
1981 838 45		ECGRIHH29



ECO GRIGIO GLAZED  
Clear safety glass

Height / Thickness mm	Width mm	Product Code
1981 686 35		ECGRI23G
1981 762 35		ECGRI26G
1981 838 35		ECGRI29G

**PRE-FINISHED**

1981 686 35		ECGRI23G
1981 762 35		ECGRI26G
1981 838 35		ECGRI29G



ECO WENGE  
Grooved

Height / Thickness mm	Width mm	Product Code
1981 610 35		ECWEN20
1981 686 35		ECWEN23
1981 762 35		ECWEN26
1981 838 35		ECWEN29

**PRE-FINISHED**

1981 610 35		ECWEN20
1981 686 35		ECWEN23
1981 762 35		ECWEN26
1981 838 35		ECWEN29

**PRE-FINISHED FIRE DOORS**

1981 686 45		ECWENHH23
1981 762 45		ECWENHH26
1981 838 45		ECWENHH29



ECO WENGE GLAZED  
Clear safety glass

Height / Thickness mm	Width mm	Product Code
1981 686 35		ECWEN23G
1981 762 35		ECWEN26G
1981 838 35		ECWEN29G

**PRE-FINISHED**

1981 686 35		ECWEN23G
1981 762 35		ECWEN26G
1981 838 35		ECWEN29G



ECO MIEL

Height / Thickness mm	Width mm	Product Code
1981 610 35		ECMIE20
1981 686 35		ECMIE23
1981 762 35		ECMIE26
1981 838 35		ECMIE29

**PRE-FINISHED**

1981 610 35		ECMIE20
1981 686 35		ECMIE23
1981 762 35		ECMIE26
1981 838 35		ECMIE29

**PRE-FINISHED FIRE DOORS**

1981 686 45		ECMIEHH23
1981 762 45		ECMIEHH26
1981 838 45		ECMIEHH29



ECO MIEL GLAZED  
Clear safety glass

Height / Thickness mm	Width mm	Product Code
1981 686 35		ECMIE23G
1981 762 35		ECMIE26G
1981 838 35		ECMIE29G

**PRE-FINISHED**

1981 686 35		ECMIE23G
1981 762 35		ECMIE26G
1981 838 35		ECMIE29G



AXIS WHITE

# Symmetry

See page 5 for Fire Door details.

Suitable for  
**POCKET  
DOOR  
SYSTEM**  
see page 74



Doors marked with † are not FSC certified

- New designs for 2015
- Wide shaker style panels
- Solid core construction
- FD30 fire doors
- FSC® chain of custody certified for selected door designs

Subtle yet contemporary – Symmetry’s wide shaker panel designs offer a clean uncomplicated style, perfect for classic and modern interiors.

Exclusive to JB Kind, the Symmetry range has proved so popular that six new Axis designs have been introduced for 2015. With a choice of white, walnut, oak and monochrome, you can now contrast styles throughout your home.



New Axis oak, walnut and monochrome are supplied fully finished, while Axis white, Geo and Eccentro are primed ready for painting.



**MATCHING BI-FOLD DOORS**  
see pages 70-73



AXIS WHITE

AXIS WHITE GLAZED  
Clear safety glass

Height / Width / Thickness mm	Product Code
<b>PRIMED</b>	
1981 610 35	SAXI20
1981 686 35	SAXI23
1981 762 35	SAXI26
1981 838 35	SAXI29
<b>PRIMED FIRE DOORS</b>	
1981 686 44	SAXI23FD30
1981 762 44	SAXI26FD30
1981 838 44	SAXI29FD30

Height / Width / Thickness mm	Product Code
<b>PRIMED</b>	
1981 686 35	SAXI23G
1981 762 35	SAXI26G
1981 838 35	SAXI29G

Timber veneers are a natural material and variations in the colour and graining should be expected. Colours depicted are representative only.



New **AXIS OAK GLAZED\***  
Clear safety glass

Height / Width / Thickness mm	Product Code
<b>PRE-FINISHED</b>	
1981 686 35	VOAXI23G
1981 762 35	VOAXI26G
1981 838 35	VOAXI29G



New **AXIS WALNUT\***

Height / Width / Thickness mm	Product Code
<b>PRE-FINISHED</b>	
1981 610 35	VWAXI20
1981 686 35	VWAXI23
1981 762 35	VWAXI26
1981 838 35	VWAXI29
<b>PRE-FINISHED FIRE DOORS</b>	
1981 686 44	VWAXI23FD30
1981 762 44	VWAXI26FD30
1981 838 44	VWAXI29FD30



New **AXIS WALNUT\***  
Clear safety glass

Height / Width / Thickness mm	Product Code
<b>PRE-FINISHED</b>	
1981 686 35	VWAXI23G
1981 762 35	VWAXI26G
1981 838 35	VWAXI29G

Symmetry continues overleaf







AXIS OAK



ECCENTRO GLAZED

Using symmetrical design as a basis, these clean, contemporary doors benefit from a solid core construction and represent exceptional value for money.

Black and white is back – make a statement in your home with our new pre-finished Axis monochrome door and introduce a Wow factor with its striking chequered opaque glass partner.



**New** **AXIS MONOCHROME**  
Black panel

Height / Width / Thickness mm	Product Code
<b>PRE-FINISHED</b>	
1981 610 35	<b>SAXIMON20</b>
1981 686 35	<b>SAXIMON23</b>
1981 762 35	<b>SAXIMON26</b>
1981 838 35	<b>SAXIMON29</b>



**New** **AXIS MONOCHROME GLAZED**  
Opaque, chequered safety glass

Height / Width / Thickness mm	Product Code
<b>PRE-FINISHED</b>	
1981 686 35	<b>SAXIMON23G</b>
1981 762 35	<b>SAXIMON26G</b>
1981 838 35	<b>SAXIMON29G</b>



**GEO**

Height / Width / Thickness mm	Product Code
<b>PRIMED</b>	
1981 610 35	<b>SGE020</b>
1981 686 35	<b>SGE023</b>
1981 762 35	<b>SGE026</b>
1981 838 35	<b>SGE029</b>
<b>PRIMED FIRE DOORS</b>	
1981 686 44	<b>SGE023FD30</b>
1981 762 44	<b>SGE026FD30</b>
1981 838 44	<b>SGE029FD30</b>



**GEO GLAZED**  
Clear safety glass

Height / Width / Thickness mm	Product Code
<b>PRIMED</b>	
1981 686 35	<b>SGE023G</b>
1981 762 35	<b>SGE026G</b>
1981 838 35	<b>SGE029G</b>



**ECCENTRO**

Height / Width / Thickness mm	Product Code
<b>PRIMED</b>	
1981 610 35	<b>SECC20</b>
1981 686 35	<b>SECC23</b>
1981 762 35	<b>SECC26</b>
1981 838 35	<b>SECC29</b>
<b>PRIMED FIRE DOORS</b>	
1981 686 44	<b>SECC23FD30</b>
1981 762 44	<b>SECC26FD30</b>
1981 838 44	<b>SECC29FD30</b>



**ECCENTRO GLAZED**  
Clear safety glass

Height / Width / Thickness mm	Product Code
<b>PRIMED</b>	
1981 686 35	<b>SECC23G</b>
1981 762 35	<b>SECC26G</b>
1981 838 35	<b>SECC29G</b>



**Timber accessories**

Architraves, linings and skirting.

See page 76.



**Useful Tip:**

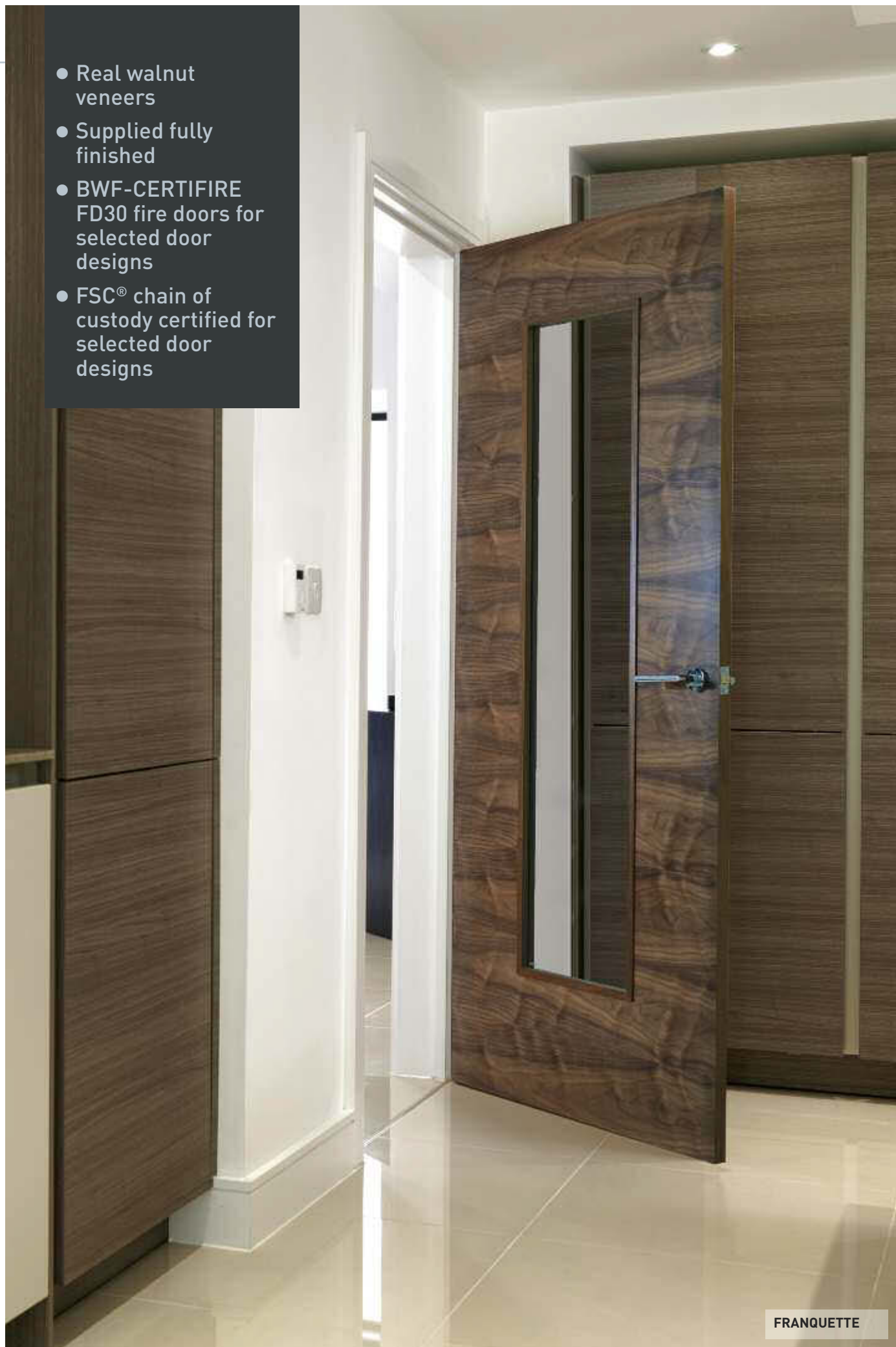
When choosing a wood finish – rather than applying a water based product, we advise using a good quality solvent based finish.

**New** to JB Kind, a range of handles and latch packs

See page 75.



- Real walnut veneers
- Supplied fully finished
- BWF-CERTIFIRE FD30 fire doors for selected door designs
- FSC® chain of custody certified for selected door designs



FRANQUETTE

# Walnut Flush

See page 5 for Fire Door details.

Suitable for  
**POCKET  
DOOR  
SYSTEM**  
see page 74



Doors marked with † do not have BWF-CERTIFIRE or FSC certification

Sleek and contemporary, walnut veneered internal doors are a favourite in the world of interior design and one of our best selling ranges.

Enjoy the flush modern designs, superior varnish finish and introduce a touch of luxury and warmth to your home interior.



See pages 31 & 59 for Oak & White

**MISTRAL WALNUT\***  
Grooved

Height / Width / Thickness mm	Product Code
<b>PRE-FINISHED</b>	
1981 610 35	WMIS20
1981 686 35	WMIS23
1981 762 35	WMIS26
1981 838 35	WMIS29
2040 526 40	WMIS526
2040 626 40	WMIS626
2040 726 40	WMIS726
2040 826 40	WMIS826
<b>PRE-FINISHED FIRE DOORS</b>	
1981 686 44	WMIS23FD30
1981 762 44	WMIS26FD30
1981 838 44	WMIS29FD30
2040 726 44	WMIS726FD30
2040 826 44	WMIS826FD30
2040 926 44	WMIS926FD30



**New** to JB Kind, a range of handles and latch packs

See page 75.

**Bespoke Options:**  
Alternative walnut door designs and special sizes can be made to order.

Call our Sales team on 01283 554197 to discuss your requirements.

Timber veneers are a natural material and variations in the colour and graining should be expected. Colours depicted are representative only.



**MISTRAL WALNUT GLAZED\***  
Clear safety glass, Grooved

Height / Width / Thickness mm	Product Code
<b>PRE-FINISHED</b>	
1981 686 35	WMIS23G
1981 762 35	WMIS26G
1981 838 35	WMIS29G
2040 626 40	WMIS626G
2040 726 40	WMIS726G
2040 826 40	WMIS826G



**VINA**  
Oak inlay

Height / Width / Thickness mm	Product Code
<b>PRE-FINISHED</b>	
1981 610 35	WVIN20
1981 686 35	WVIN23
1981 762 35	WVIN26
1981 838 35	WVIN29
<b>PRE-FINISHED FIRE DOORS</b>	
1981 686 44	WVIN23FD30
1981 762 44	WVIN26FD30
1981 838 44	WVIN29FD30



**VALCOR**  
Clear safety glass, Oak inlay

Height / Width / Thickness mm	Product Code
<b>PRE-FINISHED</b>	
1981 686 35	WVAL23
1981 762 35	WVAL26
1981 838 35	WVAL29

Walnut Flush continues overleaf







The luxury varnish finish and premium quality veneers set our Walnut Flush doors apart from any other. Whether you prefer the contrast of vertical and horizontal veneers with oak inlays, plain flush or grooved designs – you are spoilt for choice.

Enhanced with solid timber lippings to assist fitting, you will be surprised by the affordability.

**Bespoke Options:**

Alternative walnut door designs and special sizes can be made to order.

Call our Sales team on **01283 554197** to discuss your requirements.



**MAYETTE**  
Oak inlay

Height / Width / Thickness mm	Product Code
-------------------------------	--------------

PRE-FINISHED	
1981 610 35	WMAY20
1981 686 35	WMAY23
1981 762 35	WMAY26
1981 838 35	WMAY29
PRE-FINISHED FIRE DOORS	
1981 686 44	WMAY23FD30
1981 762 44	WMAY26FD30
1981 838 44	WMAY29FD30



**EDRAS**  
Clear safety glass, Oak inlay

Height / Width / Thickness mm	Product Code
-------------------------------	--------------

PRE-FINISHED	
1981 686 35	WEDR23
1981 762 35	WEDR26
1981 838 35	WEDR29



**LARA\***  
Grooved

Height / Width / Thickness mm	Product Code
-------------------------------	--------------

PRE-FINISHED	
1981 610 35	WLAR20
1981 686 35	WLAR23
1981 762 35	WLAR26
1981 838 35	WLAR29
PRE-FINISHED FIRE DOORS	
1981 610 44	WLAR20FD30
1981 686 44	WLAR23FD30
1981 762 44	WLAR26FD30
1981 838 44	WLAR29FD30



**PARISIENNE\***  
Clear safety glass

Height / Width / Thickness mm	Product Code
-------------------------------	--------------

PRE-FINISHED	
1981 686 35	WPAR23
1981 762 35	WPAR26
1981 838 35	WPAR29



**FERNOR\***

Height / Width / Thickness mm	Product Code
-------------------------------	--------------

PRE-FINISHED	
1981 610 35	WFER20
1981 686 35	WFER23
1981 762 35	WFER26
1981 838 35	WFER29
PRE-FINISHED FIRE DOORS	
1981 610 44	WFER20FD30
1981 686 44	WFER23FD30
1981 762 44	WFER26FD30
1981 838 44	WFER29FD30



**FRANQUETTE\***  
Clear safety glass

Height / Width / Thickness mm	Product Code
-------------------------------	--------------

PRE-FINISHED	
1981 686 35	WFRA23
1981 762 35	WFRA26
1981 838 35	WFRA29



Timber veneers are a natural material and variations in the colour and graining should be expected. Colours depicted are representative only.

\* Matching door pairs cannot be guaranteed



- New range for 2015
- Unique painted colour finishes
- Contemporary grooved panel design
- BWF-CERTIFIRE FD30 fire doors

**Bespoke Options:**  
 Alternative designs, painted finishes and special sizes can be made to order. Minimum quantity may apply.  
 Call our Sales team on 01283 554197 to discuss your requirements.

VIRIDIS

# Nuance

See page 5 for Fire Door details.

Suitable for  
**POCKET  
 DOOR  
 SYSTEM**  
 see page 74



Inspired by the current trend for natural tones, the Nuance door range introduces a subtle selection of pre-finished painted doors. Our innovative painting technique achieves a beautiful timber graining effect, enhanced with a stylish grooved panel design.

Complement your interior with these stunning doors and take advantage of their affordability.

Colours depicted are representative only



**New ARDOSIA**  
 Grey coloured grooves

Height / Width / Thickness mm	Product Code
<b>FINISHED</b>	
1981 610 35	NARD20
1981 686 35	NARD23
1981 762 35	NARD26
1981 838 35	NARD29
<b>FINISHED FIRE DOORS</b>	
1981 686 44	NARD23FD30
1981 762 44	NARD26FD30
1981 838 44	NARD29FD30



**New ARABICA**  
 Light coloured grooves

Height / Width / Thickness mm	Product Code
<b>FINISHED</b>	
1981 610 35	NARA20
1981 686 35	NARA23
1981 762 35	NARA26
1981 838 35	NARA29
<b>FINISHED FIRE DOORS</b>	
1981 686 44	NARA23FD30
1981 762 44	NARA26FD30
1981 838 44	NARA29FD30



**New ARABICA GLAZED**  
 Light coloured grooves, Clear safety glass

Height / Width / Thickness mm	Product Code
<b>FINISHED</b>	
1981 686 35	NARA23G
1981 762 35	NARA26G
1981 838 35	NARA29G



**ARDOSIA**  
 Slate grey coloured grained effect



**ARABICA**  
 Coffee coloured grained effect



**VIRIDIS**  
 Creamy green coloured grained effect



**New ARDOSIA GLAZED**  
 Grey coloured grooves, Clear safety glass

Height / Width / Thickness mm	Product Code
<b>FINISHED</b>	
1981 686 35	NARD23G
1981 762 35	NARD26G
1981 838 35	NARD29G



**New VIRIDIS**  
 Light coloured grooves

Height / Width / Thickness mm	Product Code
<b>FINISHED</b>	
1981 610 35	NVIR20
1981 686 35	NVIR23
1981 762 35	NVIR26
1981 838 35	NVIR29
<b>FINISHED FIRE DOORS</b>	
1981 686 44	NVIR23FD30
1981 762 44	NVIR26FD30
1981 838 44	NVIR29FD30



**New VIRIDIS GLAZED**  
 Light coloured grooves, Clear safety glass

Height / Width / Thickness mm	Product Code
<b>FINISHED</b>	
1981 686 35	NVIR23G
1981 762 35	NVIR26G
1981 838 35	NVIR29G



# Royale Modern

See page 5 for Fire Door details.

Suitable for  
**POCKET  
DOOR  
SYSTEM**  
see page 74



- Real oak veneers with a luxury varnish finish
- Solid core construction
- Fully accredited FD30 fire doors (glazed FD30 available to order)
- FSC® chain of custody certified for selected door designs

Contemporary and sleek, Royale Modern offers the superior quality synonymous with JB Kind's prestige door range.

The premium construction includes substantial timber lippings to accommodate a high degree of reduction to fit. This first-class quality guarantees against deformation, warping and splitting. Rebated door pairs are available to order.

Royale Modern  
continues overleaf



**New** to JB Kind, a range of  
handles and latch packs

See page 75.



**Timber accessories**

Architraves, linings  
and skirting.

See page 76.



Timber veneers are a natural material and variations in the colour and graining should be expected. Colours depicted are representative only.



**VP7 OAK**

Height	Width	Product
Thickness mm		Code

**PRE-FINISHED**

1981 610 35	VP7610-0
1981 686 35	VP7686-0
1981 762 35	VP7762-0
1981 838 35	VP7838-0

**PRE-FINISHED FIRE DOORS**

1981 686 45	VP7HH686-0
1981 762 45	VP7HH762-0
1981 838 45	VP7HH838-0



**VP7-1VCB OAK**

Clear diamond cut safety glass

Height	Width	Product
Thickness mm		Code

**PRE-FINISHED**

1981 686 35	VP71VCB686-0
1981 762 35	VP71VCB762-0
1981 838 35	VP71VCB838-0



**VT5 OAK\***

Height	Width	Product
Thickness mm		Code

**PRE-FINISHED**

1981 610 35	VT5610-0
1981 686 35	VT5686-0
1981 762 35	VT5762-0
1981 838 35	VT5838-0

**PRE-FINISHED FIRE DOORS**

1981 762 45	VT5HH762-0
1981 838 45	VT5HH838-0



**VT5-1VB OAK\***

Clear diamond cut safety glass

Height	Width	Product
Thickness mm		Code

**PRE-FINISHED**

1981 686 35	VT51VB686-0
1981 762 35	VT51VB762-0
1981 838 35	VT51VB838-0

\* Matching door pairs  
cannot be guaranteed

**Bespoke Options:**

All Royale doors are available in alternative timber veneers and special sizes, as well as many other design styles.

Call our Sales team on 01283 554197 to discuss your requirements.

**VT5-1VB OAK**





VP7 OAK



Whether you are refurbishing your home or working on a new build project, the stylish Royale Modern door designs will add that perfect finishing touch to your project.

The versatility offered by all our Royale doors is a great advantage. Rebated door pairs, as well as special sizes and alternative glazed options are available to order – the possibilities are virtually endless.

Timber veneers are a natural material and variations in the colour and graining should be expected. Colours depicted are representative only.

Doors marked with † are not FSC certified



R-11-2M OAK†

Height / Width / Thickness mm	Product Code
1981 686 35	R112M686-0
1981 762 35	R112M762-0
1981 838 35	R112M838-0

**PRE-FINISHED**

1981 686 35	R112M686-0
1981 762 35	R112M762-0
1981 838 35	R112M838-0

**PRE-FINISHED FIRE DOORS**

1981 762 45	R112MHH762-0
1981 838 45	R112MHH838-0



R-11-2V OAK†

Clear bevelled safety glass

Height / Width / Thickness mm	Product Code
1981 686 35	R112V686-0
1981 762 35	R112V762-0
1981 838 35	R112V838-0

**PRE-FINISHED**

1981 686 35	R112V686-0
1981 762 35	R112V762-0
1981 838 35	R112V838-0



R-03 OAK†

Height / Width / Thickness mm	Product Code
1981 610 35	R03610-0
1981 686 35	R03686-0
1981 762 35	R03762-0
1981 838 35	R03838-0

**PRE-FINISHED**

1981 610 35	R03610-0
1981 686 35	R03686-0
1981 762 35	R03762-0
1981 838 35	R03838-0

**PRE-FINISHED FIRE DOORS**

1981 762 45	R03HH762-0
1981 838 45	R03HH838-0



R-03-3V OAK†

Clear bevelled safety glass

Height / Width / Thickness mm	Product Code
1981 686 35	R033V686-0
1981 762 35	R033V762-0
1981 838 35	R033V838-0

**PRE-FINISHED**

1981 686 35	R033V686-0
1981 762 35	R033V762-0
1981 838 35	R033V838-0

**Bespoke Options:**

All Royale doors are available in alternative timber veneers and special sizes, as well as many other design styles.

Call our Sales team on 01283 554197 to discuss your requirements.



R-04-4V



# Royale Traditional

See page 5 for Fire Door details.

- Real oak veneers
- Pre-finished & unfinished options
- Solid core construction
- BWF-CERTIFIRE FD30 fire doors for solid and glazed models



### Bespoke Options:

All Royale doors are available in alternative timber veneers and special sizes, as well as many other design styles.

Call our Sales team on 01283 554197 to discuss your requirements.

E14M OAK

Royale Traditional's classic oak veneer designs are suitable for use in almost every type of property. Offering the same benefits as Royale Modern, you will find the versatility and premium quality of our prestige range, perfect for any new build or refurbishment project.

Some of the designs are available from stock both finished and unfinished. Those marked with an \* are available fully finished to order. Rebated door pairs can also be ordered.



**11-8VN OAK\***  
Clear bevelled safety glass

Height / Width / Thickness mm	Product Code
1981 686 35	<b>UO118V686</b>
1981 762 35	<b>UO118V762</b>
1981 838 35	<b>UO118V838</b>

### Timber accessories

Architraves, linings and skirting.

See page 76.



Timber veneers are a natural material and variations in the colour and graining should be expected. Colours depicted are representative only.



**12M OAK**

Height / Width / Thickness mm	Product Code
<b>PRE-FINISHED</b>	
1981 610 35	<b>12M610-0</b>
1981 686 35	<b>12M686-0</b>
1981 762 35	<b>12M762-0</b>
1981 838 35	<b>12M838-0</b>
2030 625 40	<b>12M625-0</b>
2030 725 40	<b>12M725-0</b>
2030 825 40	<b>12M825-0</b>
<b>PRE-FINISHED FIRE DOORS</b>	
1981 610 45	<b>12MHH610-0</b>
1981 686 45	<b>12MHH686-0</b>
1981 762 45	<b>12MHH762-0</b>
1981 838 45	<b>12MHH838-0</b>
2030 725 45	<b>12MHH725-0</b>
2030 825 45	<b>12MHH825-0</b>
<b>UNFINISHED</b>	
1981 610 35	<b>UO12MN20</b>
1981 686 35	<b>UO12MN23</b>
1981 762 35	<b>UO12MN26</b>
1981 838 35	<b>UO12MN29</b>
<b>UNFINISHED FIRE DOORS</b>	
1981 610 45	<b>UO12MN20FD30</b>
1981 686 45	<b>UO12MN23FD30</b>
1981 762 45	<b>UO12MN26FD30</b>
1981 838 45	<b>UO12MN29FD30</b>



**12-6VM OAK**

Height / Width / Thickness mm	Product Code
<b>Clear bevelled safety glass</b>	
<b>Clear fire glass</b>	
<b>PRE-FINISHED</b>	
1981 610 35	<b>126VM610G-0</b>
1981 686 35	<b>126VM686G-0</b>
1981 762 35	<b>126VM762G-0</b>
1981 838 35	<b>126VM838G-0</b>
2030 625 40	<b>126VM625G-0</b>
2030 725 40	<b>126VM725G-0</b>
2030 825 40	<b>126VM825G-0</b>
<b>PRE-FINISHED FIRE DOORS</b>	
1981 686 45	<b>126VMHH686G-0</b>
1981 762 45	<b>126VMHH762G-0</b>
1981 838 45	<b>126VMHH838G-0</b>
<b>UNFINISHED</b>	
1981 610 35	<b>UO126VMN20</b>
1981 686 35	<b>UO126VMN23</b>
1981 762 35	<b>UO126VMN26</b>
1981 838 35	<b>UO126VMN29</b>
<b>UNFINISHED FIRE DOORS</b>	
1981 686 45	<b>UO126VMN23FD30</b>
1981 762 45	<b>UO126VMN26FD30</b>
1981 838 45	<b>UO126VMN29FD30</b>



**E14M OAK**

Height / Width / Thickness mm	Product Code
<b>PRE-FINISHED</b>	
1981 610 35	<b>E14M610-0</b>
1981 686 35	<b>E14M686-0</b>
1981 762 35	<b>E14M762-0</b>
1981 838 35	<b>E14M838-0</b>
<b>PRE-FINISHED FIRE DOORS</b>	
1981 686 45	<b>E14MHH686-0</b>
1981 762 45	<b>E14MHH762-0</b>
1981 838 45	<b>E14MHH838-0</b>
<b>UNFINISHED</b>	
1981 610 35	<b>UOE14MN20</b>
1981 686 35	<b>UOE14MN23</b>
1981 762 35	<b>UOE14MN26</b>
1981 838 35	<b>UOE14MN29</b>
<b>UNFINISHED FIRE DOORS</b>	
1981 686 45	<b>UOE14MN23FD30</b>
1981 762 45	<b>UOE14MN26FD30</b>
1981 838 45	<b>UOE14MN29FD30</b>



**E14-2VMN OAK\***  
Unglazed

Height / Width / Thickness mm	Product Code
<b>UNFINISHED</b>	
1981 686 35	<b>UOE142VMN23</b>
1981 762 35	<b>UOE142VMN26</b>
1981 838 35	<b>UOE142VMN29</b>



**E16MN OAK\***

Height / Width / Thickness mm	Product Code
<b>UNFINISHED</b>	
1981 610 35	<b>UOE16MN20</b>
1981 686 35	<b>UOE16MN23</b>
1981 762 35	<b>UOE16MN26</b>
1981 838 35	<b>UOE16MN29</b>
<b>UNFINISHED FIRE DOORS</b>	
1981 686 45	<b>UOE16MN23FD30</b>
1981 762 45	<b>UOE16MN26FD30</b>
1981 838 45	<b>UOE16MN29FD30</b>

\*Only available as unfinished from stock, fully finished available to order.





**Bespoke Options:**  
 Brisa doors are available in alternative timber veneers and special sizes, as well as many other design styles.  
 Call our Sales team on 01283 554197 to discuss your requirements.

MISTRAL OAK

# Brisa

Suitable for  
**POCKET DOOR SYSTEM**  
 see page 74

See page 5 for Fire Door details.

- Real oak veneers
- Contemporary flush door designs
- Supplied fully finished
- FD30 fire doors

Brisa oak veneered doors exude style and are the perfect complement for modern interiors. Without compromising on quality, the construction technique used within the Brisa door family offers an incredible price advantage for this top selling range.

Alternating horizontal and vertical oak veneers, with attractive grooves and a beautiful varnish finish – you will not be disappointed.



MISTRAL OAK  
 Grooved

Height / Width / Thickness mm	Product Code
<b>PRE-FINISHED</b>	
1981 533 35	OMIS19
1981 610 35	OMIS20
1981 686 35	OMIS23
1981 762 35	OMIS26
1981 838 35	OMIS29
2040 526 40	OMIS526
2040 626 40	OMIS626
2040 726 40	OMIS726
2040 826 40	OMIS826

MATCHING BI-FOLD DOORS  
 see pages 70-73

See pages 19 & 59 for Walnut & White



SIROCCO  
 Grooved

Height / Width / Thickness mm	Product Code
<b>PRE-FINISHED</b>	
1981 610 35	OSIR20
1981 686 35	OSIR23
1981 762 35	OSIR26
1981 838 35	OSIR29
<b>PRE-FINISHED FIRE DOORS</b>	
1981 686 44	OSIR23FD30
1981 762 44	OSIR26FD30
1981 838 44	OSIR29FD30

Timber veneers are a natural material and variations in the colour and graining should be expected. Colours depicted are representative only.



MISTRAL OAK GLAZED  
 Clear safety glass, Grooved, Flush beaded

Height / Width / Thickness mm	Product Code
<b>PRE-FINISHED</b>	
1981 686 35	OMIS23G
1981 762 35	OMIS26G
1981 838 35	OMIS29G
2040 626 40	OMIS626G
2040 726 40	OMIS726G
2040 826 40	OMIS826G



SIROCCO GLAZED  
 Clear safety glass, Grooved, Flush beaded

Height / Width / Thickness mm	Product Code
<b>PRE-FINISHED</b>	
1981 686 35	OSIR23G
1981 762 35	OSIR26G
1981 838 35	OSIR29G



OSTRIA

Height / Width / Thickness mm	Product Code
<b>PRE-FINISHED</b>	
1981 610 35	OOST20
1981 686 35	OOST23
1981 762 35	OOST26
1981 838 35	OOST29
<b>PRE-FINISHED FIRE DOORS</b>	
1981 686 44	OOST23FD30
1981 762 44	OOST26FD30
1981 838 44	OOST29FD30



OSTRIA GLAZED  
 Clear safety glass, Flush beaded

Height / Width / Thickness mm	Product Code
<b>PRE-FINISHED</b>	
1981 686 35	OOST23G
1981 762 35	OOST26G
1981 838 35	OOST29G



- Real oak veneers with light and dark coloured inlays
- Supplied fully finished
- Bespoke options available
- BWF CERTIFIRE FD30 fire doors for selected door designs



**Bespoke Options:**  
Roma door designs are available in alternative timber veneers and special sizes can be made to order.

Call our Sales team on 01283 554197 to discuss your requirements.

JUNO

# Roma

See page 5 for Fire Door details.

Suitable for  
**POCKET  
DOOR  
SYSTEM**  
see page 74

Modern and stylish, Roma's oak flush door designs are guaranteed to make a statement in any home.

Enhanced with either light or dark coloured real wood inlays, you are spoilt for choice with the design options available. The stunning oak veneers are accentuated with a luxury varnish finish, which really adds a touch of class to these beautiful doors.



Roma continues overleaf



LUCINA

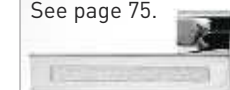
Height / Width / Thickness mm Product Code

PRE-FINISHED		
1981 610 35		OLUC20
1981 686 35		OLUC23
1981 762 35		OLUC26
1981 838 35		OLUC29
PRE-FINISHED FIRE DOORS		
1981 762 44		OLUC26FD30
1981 838 44		OLUC29FD30

Timber veneers are a natural material and variations in the colour and graining should be expected. Colours depicted are representative only.

**New** to JB Kind, a range of handles and latch packs

See page 75.



Light wood inlay

VENUS

Height / Width / Thickness mm Product Code

PRE-FINISHED		
1981 610 35		OVEN20
1981 686 35		OVEN23
1981 762 35		OVEN26
1981 838 35		OVEN29
PRE-FINISHED FIRE DOORS		
1981 762 44		OVEN26FD30
1981 838 44		OVEN29FD30



JUNO

Clear bevelled safety glass

Height / Width / Thickness mm Product Code

PRE-FINISHED		
1981 686 35		OJUN23
1981 762 35		OJUN26
1981 838 35		OJUN29



DIANA

Height / Width / Thickness mm Product Code

PRE-FINISHED		
1981 610 35		ODIA20
1981 686 35		ODIA23
1981 762 35		ODIA26
1981 838 35		ODIA29
PRE-FINISHED FIRE DOORS		
1981 762 44		ODIA26FD30
1981 838 44		ODIA29FD30



MINERVA

Clear bevelled safety glass

Height / Width / Thickness mm Product Code

1981 686 35		OMIN23
1981 762 35		OMIN26
1981 838 35		OMIN29



Attractive and subtle, the genuine wood inlays enhance the stunning pre-finished oak veneers perfectly to really set these doors apart.

Supplied with solid timber lippings to help accommodate reduction to fit. Plus, the Blenheim offers a glazed fire door option from stock.



**CHARTWELL†**  
Wenge Inlay

Height / Width / Thickness mm	Product Code
<b>PRE-FINISHED</b>	
1981 533 35	<b>CCHA19</b>
1981 610 35	<b>CCHA20</b>
1981 686 35	<b>CCHA23</b>
1981 762 35	<b>CCHA26</b>
1981 838 35	<b>CCHA29</b>



Wenge inlay

Height / Width / Thickness mm	Product Code
<b>PRE-FINISHED FIRE DOORS</b>	
1981 686 44	<b>CCHA23FD30</b>
1981 762 44	<b>CCHA26FD30</b>
1981 838 44	<b>CCHA29FD30</b>



**BLENHEIM†**  
Wenge Inlay  
Clear Safety Glass or  
Pyrodur Plus on FD30

Height / Width / Thickness mm	Product Code
<b>PRE-FINISHED</b>	
1981 686 35	<b>CBLE23</b>
1981 762 35	<b>CBLE26</b>
1981 838 35	<b>CBLE29</b>
<b>PRE-FINISHED FIRE DOORS</b>	
1981 762 44	<b>CBLE26FD30G</b>
1981 838 44	<b>CBLE29FD30G</b>

[www.jbkind.com](http://www.jbkind.com)



**CLEMENTINE†**  
Walnut Inlay

Height / Width / Thickness mm	Product Code
<b>PRE-FINISHED</b>	
1981 533 35	<b>CCLE19</b>
1981 610 35	<b>CCLE20</b>
1981 686 35	<b>CCLE23</b>
1981 762 35	<b>CCLE26</b>
1981 838 35	<b>CCLE29</b>

T: 01283 554197



Walnut inlay

Height / Width / Thickness mm	Product Code
<b>PRE-FINISHED FIRE DOORS</b>	
1981 686 44	<b>CCL23FD30</b>
1981 762 44	<b>CCL26FD30</b>
1981 838 44	<b>CCL29FD30</b>



**SPENCER†**  
Walnut Inlay  
Clear Safety Glass

Height / Width / Thickness mm	Product Code
<b>PRE-FINISHED</b>	
1981 686 35	<b>CSPE23</b>
1981 762 35	<b>CSPE26</b>
1981 838 35	<b>CSPE29</b>

Doors marked with † are not BWF certified

Timber veneers are a natural material and variations in the colour and graining should be expected. Colours depicted are representative only.

**Timber accessories**  
Architraves, linings and skirting.

See page 76.

**New** to JB Kind, a range of handles and latch packs

See page 75.







**Bespoke Options:**

Elements door designs are available in alternative timber veneers and special sizes can be made to order.

Call our Sales team on 01283 554197 to discuss your requirements.

SOL

# Elements

See page 5 for Fire Door details.

Suitable for  
**POCKET  
DOOR  
SYSTEM**  
see page 74



- Real oak veneers with dark coloured grooves
- Supplied fully finished
- Bespoke options available
- BWF CERTIFIRE FD30 fire doors (glazed FD30 available to order)

Elements curvaceous designs bring modern originality to oak flush veneered doors. Exclusive to JB Kind, the attractive dark coloured grooves are positioned in a selection of eye-catching designs that are sure to be admired. The premium quality construction is completed with a luxury varnish finish and incorporates matching concealed lippings to accommodate reduction to fit.

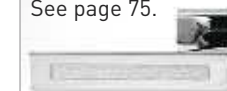


**ARCOS**  
Grooved

Height / Width / Thickness mm	Product Code
<b>PRE-FINISHED</b>	
1981 610 35	<b>EARC20</b>
1981 686 35	<b>EARC23</b>
1981 762 35	<b>EARC26</b>
1981 838 35	<b>EARC29</b>
<b>PRE-FINISHED FIRE DOORS</b>	
1981 686 44	<b>EARC23FD30</b>
1981 762 44	<b>EARC26FD30</b>
1981 838 44	<b>EARC29FD30</b>

**New** to JB Kind, a range of handles and latch packs

See page 75.



Timber veneers are a natural material and variations in the colour and graining should be expected. Colours depicted are representative only.



**AGUA**  
Grooved

Height / Width / Thickness mm	Product Code
<b>PRE-FINISHED</b>	
1981 610 35	<b>EAGU20</b>
1981 686 35	<b>EAGU23</b>
1981 762 35	<b>EAGU26</b>
1981 838 35	<b>EAGU29</b>
<b>PRE-FINISHED FIRE DOORS</b>	
1981 686 44	<b>EAGU23FD30</b>
1981 762 44	<b>EAGU26FD30</b>
1981 838 44	<b>EAGU29FD30</b>



**AGUA GLAZED**  
Clear safety glass, Grooved

Height / Width / Thickness mm	Product Code
<b>PRE-FINISHED</b>	
1981 686 35	<b>EAGU23G</b>
1981 762 35	<b>EAGU26G</b>
1981 838 35	<b>EAGU29G</b>



**ARCOS GLAZED**  
Clear safety glass, Grooved

Height / Width / Thickness mm	Product Code
<b>PRE-FINISHED</b>	
1981 686 35	<b>EARC23G</b>
1981 762 35	<b>EARC26G</b>
1981 838 35	<b>EARC29G</b>



**SOL**  
Grooved

Height / Width / Thickness mm	Product Code
<b>PRE-FINISHED</b>	
1981 610 35	<b>ESOL20</b>
1981 686 35	<b>ESOL23</b>
1981 762 35	<b>ESOL26</b>
1981 838 35	<b>ESOL29</b>
<b>PRE-FINISHED FIRE DOORS</b>	
1981 686 44	<b>ESOL23FD30</b>
1981 762 44	<b>ESOL26FD30</b>
1981 838 44	<b>ESOL29FD30</b>



**SOL GLAZED**  
Clear safety glass, Grooved

Height / Width / Thickness mm	Product Code
<b>PRE-FINISHED</b>	
1981 686 35	<b>ESOL23G</b>
1981 762 35	<b>ESOL26G</b>
1981 838 35	<b>ESOL29G</b>



# River Oak Modern

See page 5 for Fire Door details.

Suitable for  
**POCKET  
DOOR  
SYSTEM**  
see page 74

- New glazed option for 2015
- Real oak veneers
- Supplied fully finished
- Solid core construction
- FD30 fire doors for solid & glazed models

One of our best selling door styles, the Isis, with its matching glazed partners is a favourite for those that enjoy classic contemporary interiors. With a stunning new glazed design for 2015 and the option to purchase glazed fire doors from stock, you really are spoilt for choice.

The quality varnish finish accentuates the stylish grooved panel design, offering a popular door style at an affordable price.



EMRAL

### Bespoke Options:

River Oak Modern door designs are available in alternative timber veneers and special sizes can be made to order.

Call our Sales team on 01283 554197 to discuss your requirements.

Timber veneers are a natural material and variations in the colour and graining should be expected. Colours depicted are representative only.



Grooves

### Timber accessories

Architraves, linings and skirting.  
See page 76.

### New to JB Kind, a range of handles and latch packs

See page 75.



ISIS

Height / Width / Thickness mm	Product Code
<b>PRE-FINISHED</b>	
1981 533 35	OISI19
1981 610 35	OISI20
1981 686 35	OISI23
1981 762 35	OISI26
1981 838 35	OISI29
2040 626 40	OISI626
2040 726 40	OISI726
2040 826 40	OISI826

Height / Width / Thickness mm	Product Code
<b>PRE-FINISHED FIRE DOORS</b>	
1981 533 44	OISI19FD30
1981 610 44	OISI20FD30
1981 686 44	OISI23FD30
1981 762 44	OISI26FD30
1981 838 44	OISI29FD30
2040 726 44	OISI726FD30
2040 826 44	OISI826FD30
2040 926 44	OISI926FD30



New MEDINA  
Clear safety glass or clear fire safety glass

Height / Width / Thickness mm	Product Code
<b>PRE-FINISHED</b>	
1981 686 35	OMED23G
1981 762 35	OMED26G
1981 838 35	OMED29G
2040 626 40	OMED626G
2040 726 40	OMED726G
2040 826 40	OMED826G



EMRAL  
Clear safety glass or clear fire safety glass on FD30

Height / Width / Thickness mm	Product Code
<b>PRE-FINISHED</b>	
1981 686 35	OEMR23
1981 762 35	OEMR26
1981 838 35	OEMR29
<b>PRE-FINISHED FIRE DOORS</b>	
1981 686 44	OEMR23FD30
1981 762 44	OEMR26FD30
1981 838 44	OEMR29FD30



BELA  
Clear safety glass

Height / Width / Thickness mm	Product Code
<b>PRE-FINISHED</b>	
1981 610 35	OBEL20
1981 686 35	OBEL23
1981 762 35	OBEL26
1981 838 35	OBEL29



- New glazed design for 2015
- Real oak veneers
- Fully finished and unfinished options
- Solid core construction
- FD30 fire doors



THAMES ORIGINAL

# River Oak Cottage

See page 5 for Fire Door details.

Suitable for  
**POCKET  
DOOR  
SYSTEM**  
see page 74

Cottage style doors are ideal for a wide variety of projects, from barn conversions to modern new builds. The aesthetically pleasing boarded style appearance, gives these doors top selling status.

At first glance, the differences between the Thames Original, Thames II and Yoxall may not be obvious. It is all in the construction and the close up images below highlight the variances. So whatever your budget, there is a River Oak Cottage door for you.

All images are shown finished for illustrative purposes only.

**New** to JB Kind, a range of handles and latch packs

See page 75.



Timber veneers are a natural material and variations in the colour and graining should be expected. Colours depicted are representative only.



**Thames Original close up detail**  
The grooved centre panel is full door thickness



**Thames II close up detail**  
The centre grooved panel is recessed and is not as thick as the outer frame



**Yoxall close up detail**  
A higher specification, this door is individually boarded not grooved



**TUTBURY\***  
Individually boarded  
Clear bevelled safety glass

Height / Width / Thickness mm	Product Code
1981 686 35	OTUT23 <sup>Y</sup>
1981 762 35	OTUT26 <sup>Y</sup>
1981 838 35	OTUT29 <sup>Y</sup>

**Doors marked <sup>Y</sup>**  
Many of our River Oak Cottage doors are also available with full varnish finish from stock.

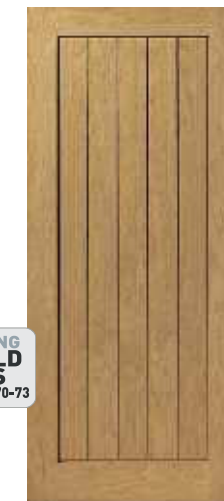
\*Also available fully finished



**THAMES ORIGINAL\***  
Grooved face

Height / Width / Thickness mm	Product Code
1981 457 35	OTHA16
1981 533 35	OTHA19
1981 610 35	OTHA20 <sup>Y</sup>
1981 686 35	OTHA23 <sup>Y</sup>
1981 762 35	OTHA26 <sup>Y</sup>
1981 838 35	OTHA29 <sup>Y</sup>
2040 626 40	OTHA626 <sup>Y</sup>
2040 726 40	OTHA726 <sup>Y</sup>
2040 826 40	OTHA826 <sup>Y</sup>
2040 926 40	OTHA926

UNFINISHED FIRE DOORS	
1981 686 44	OTHA23FD30 <sup>Y</sup>
1981 762 44	OTHA26FD30 <sup>Y</sup>
1981 838 44	OTHA29FD30 <sup>Y</sup>
2040 726 44	OTHA726FD30
2040 826 44	OTHA826FD30
2040 926 44	OTHA926FD30



**THAMES II\***  
Recessed grooved face

Height / Width / Thickness mm	Product Code
1981 457 35	MK20THA16
1981 533 35	MK20THA19
1981 610 35	MK20THA20 <sup>Y</sup>
1981 686 35	MK20THA23 <sup>Y</sup>
1981 762 35	MK20THA26 <sup>Y</sup>
1981 838 35	MK20THA29 <sup>Y</sup>
2040 626 40	MK20THA626
2040 726 40	MK20THA726
2040 826 40	MK20THA826
2040 926 40	MK20THA926

UNFINISHED FIRE DOORS	
1981 686 44	MK20THA23FD30 <sup>Y</sup>
1981 762 44	MK20THA26FD30 <sup>Y</sup>
1981 838 44	MK20THA29FD30 <sup>Y</sup>



**YOXALL\***  
Individually boarded

Height / Width / Thickness mm	Product Code
1981 457 35	OYOX16 <sup>Y</sup>
1981 533 35	OYOX19 <sup>Y</sup>
1981 610 35	OYOX20 <sup>Y</sup>
1981 686 35	OYOX23 <sup>Y</sup>
1981 762 35	OYOX26 <sup>Y</sup>
1981 838 35	OYOX29 <sup>Y</sup>
2040 626 40	OYOX626
2040 726 40	OYOX726
2040 826 40	OYOX826
2040 926 40	OYOX926

UNFINISHED FIRE DOORS	
1981 686 44	OYOX23FD30 <sup>Y</sup>
1981 762 44	OYOX26FD30 <sup>Y</sup>
1981 838 44	OYOX29FD30 <sup>Y</sup>
2040 726 44	OYOX726FD30
2040 826 44	OYOX826FD30
2040 926 44	OYOX926FD30

**MATCHING BI-FOLD DOORS**  
see pages 70-73



THAMES II



YOXALL

Bring some light in on the situation and complement your boarded style doors with one of our glazed options. Whether you prefer full or part glazed, there is a style to help you achieve that perfect design theme.



Thames etched glass  
Clear glass with etched lines

\*Also available fully finished

**Doors marked ▼**  
Many of our River Oak Cottage doors are also available with full varnish finish from stock.



**THAMES 1 LIGHT\***  
Clear safety glass with etched lines

Height / Width / Thickness mm	Product Code
<b>UNFINISHED</b>	
1981 686 35	<b>MK20THA1L23Y</b>
1981 762 35	<b>MK20THA1L26Y</b>
1981 838 35	<b>MK20THA1L29Y</b>
2040 626 40	<b>OTHA1L626Y</b>
2040 726 40	<b>OTHA1L726Y</b>
2040 826 40	<b>OTHA1L826Y</b>



**THAMES II 1/2 LIGHT**  
Clear safety glass with etched lines, Recessed grooved panel

Height / Width / Thickness mm	Product Code
<b>UNFINISHED</b>	
1981 686 35	<b>MK20THAVL23</b>
1981 762 35	<b>MK20THAVL26</b>
1981 838 35	<b>MK20THAVL29</b>



**New** **THAMES 6 LIGHT**  
Clear safety glass, Full thickness grooved panel

Height / Width / Thickness mm	Product Code
<b>UNFINISHED</b>	
1981 686 35	<b>OTHA6L23</b>
1981 762 35	<b>OTHA6L26</b>
1981 838 35	<b>OTHA6L29</b>
2040 626 40	<b>OTHA6L626</b>
2040 726 40	<b>OTHA6L726</b>
2040 826 40	<b>OTHA6L826</b>



**TAY**  
Front

Height / Width / Thickness mm	Product Code
<b>UNFINISHED</b>	
1981 610 35	<b>OTAY20</b>
1981 686 35	<b>OTAY23</b>
1981 762 35	<b>OTAY26</b>
1981 838 35	<b>OTAY29</b>



**TAY**  
Back

Height / Width / Thickness mm	Product Code
<b>UNFINISHED FIRE DOORS</b>	
1981 686 44	<b>OTAY23FD30</b>
1981 762 44	<b>OTAY26FD30</b>
1981 838 44	<b>OTAY29FD30</b>

All images are shown finished for illustrative purposes only.

**Timber accessories**  
Architraves, linings and skirting.

See page 76.



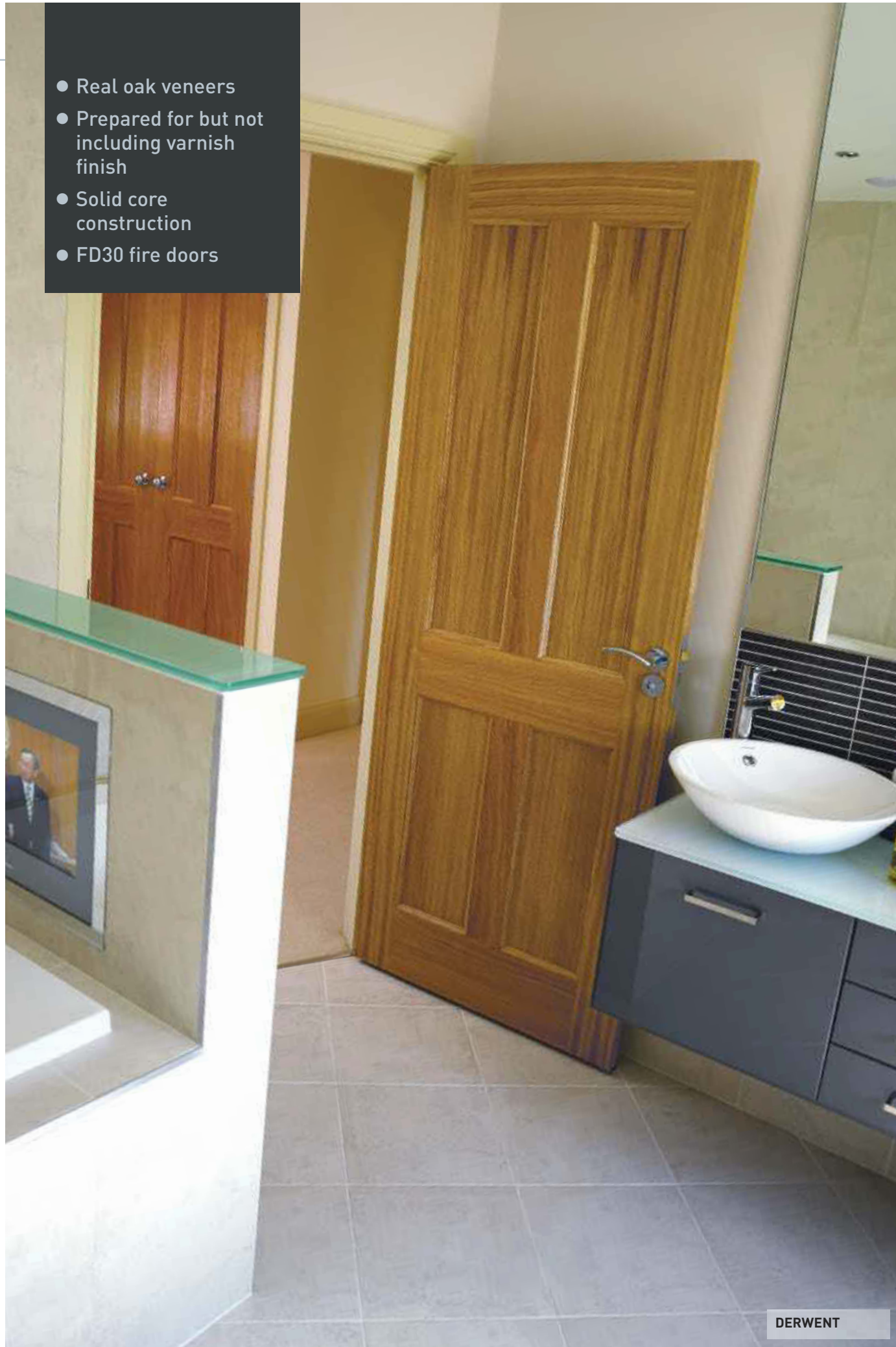
**New** to JB Kind, a range of handles and latch packs

See page 75.





- Real oak veneers
- Prepared for but not including varnish finish
- Solid core construction
- FD30 fire doors



DERWENT

# River Oak Traditional

See page 5 for Fire Door details.

A delightful selection of classic oak veneered door designs, which are the perfect complement for any style theme. The sheer quality and consistency of this range of doors have earned it an excellent reputation. Supplied unfinished to allow for a choice of varnish, the solid engineered cores offer extra stability that is often not found with similar alternatives.

Timber veneers are a natural material and variations in the colour and graining should be expected. Colours depicted are representative only.



**EDEN**  
Flat panels

Height / Width / Thickness mm	Product Code
<b>UNFINISHED</b>	
1981 610 35	<b>OEDE20</b>
1981 686 35	<b>OEDE23</b>
1981 762 35	<b>OEDE26</b>
1981 838 35	<b>OEDE29</b>
2040 626 40	<b>OEDE626</b>
2040 726 40	<b>OEDE726</b>
2040 826 40	<b>OEDE826</b>



**DARWEN**  
Clear safety glass

Height / Width / Thickness mm	Product Code
<b>UNFINISHED FIRE DOORS</b>	
1981 686 44	<b>OEDE23FD30</b>
1981 762 44	<b>OEDE26FD30</b>
1981 838 44	<b>OEDE29FD30</b>
2040 726 44	<b>OEDE726FD30</b>
2040 826 44	<b>OEDE826FD30</b>

Height / Width / Thickness mm	Product Code
<b>UNFINISHED</b>	
1981 686 35	<b>ODAR23G</b>
1981 762 35	<b>ODAR26G</b>
1981 838 35	<b>ODAR29G</b>
2040 726 40	<b>ODAR726G</b>
2040 826 40	<b>ODAR826G</b>



**MERSEY**  
Raised shaped panels

Height / Width / Thickness mm	Product Code
<b>UNFINISHED</b>	
1981 610 35	<b>OMER20</b>
1981 686 35	<b>OMER23</b>
1981 762 35	<b>OMER26</b>
1981 838 35	<b>OMER29</b>
<b>UNFINISHED FIRE DOORS</b>	
1981 762 44	<b>OMER26FD30</b>
1981 838 44	<b>OMER29FD30</b>



**HUMBER**  
Clear safety glass

Height / Width / Thickness mm	Product Code
<b>UNFINISHED</b>	
1981 762 35	<b>OHUM26</b>
1981 838 35	<b>OHUM29</b>



**TRENT**  
Raised shaped panels

Height / Width / Thickness mm	Product Code
<b>UNFINISHED</b>	
1981 457 35	<b>OTRE16</b>
1981 533 35	<b>OTRE19</b>
1981 610 35	<b>OTRE20</b>
1981 686 35	<b>OTRE23</b>
1981 762 35	<b>OTRE26</b>
1981 838 35	<b>OTRE29</b>
2032 813 35	<b>OTRE28</b>
<b>UNFINISHED FIRE DOORS</b>	
1981 686 44	<b>OTRE23FD30</b>
1981 762 44	<b>OTRE26FD30</b>
1981 838 44	<b>OTRE29FD30</b>



**DOVE**  
Clear bevelled safety glass  
Available as pairs (rebated meeting stiles)

Height / Width / Thickness mm	Product Code
<b>UNFINISHED</b>	
1981 610 35	<b>ODOV20</b>
1981 686 35	<b>ODOV23</b>
1981 762 35	<b>ODOV26</b>
1981 838 35	<b>ODOV29</b>
<b>DOVE PAIRS UNFINISHED</b>	
1981 1219 35	<b>ODOV40</b>
1981 1372 35	<b>ODOV46</b>
1981 1524 35	<b>ODOV50</b>



**DERWENT**  
Flat panels of quarter sawn oak

Height / Width / Thickness mm	Product Code
<b>UNFINISHED</b>	
1981 610 35	<b>ODER20</b>
1981 686 35	<b>ODER23</b>
1981 762 35	<b>ODER26</b>
1981 838 35	<b>ODER29</b>
2032 813 35	<b>ODER28</b>
<b>UNFINISHED FIRE DOORS</b>	
1981 686 44	<b>ODER23FD30</b>
1981 762 44	<b>ODER26FD30</b>
1981 838 44	<b>ODER29FD30</b>



**SEVERN**  
Clear safety glass

Height / Width / Thickness mm	Product Code
<b>UNFINISHED</b>	
1981 686 35	<b>OSEV23G</b>
1981 762 35	<b>OSEV26G</b>
1981 838 35	<b>OSEV29G</b>



**CHURNET**  
Diamond leaded safety glass

Height / Width / Thickness mm	Product Code
<b>UNFINISHED</b>	
1981 686 35	<b>OCHUDL23</b>
1981 762 35	<b>OCHUDL26</b>
1981 838 35	<b>OCHUDL29</b>

All images are shown finished for illustrative purposes only.





**Useful Tip:**  
When choosing a wood finish – rather than applying a water based product, we advise using a good quality solvent based finish.

FUJI

# Montana

See page 5 for Fire Door details.

Suitable for  
**POCKET  
DOOR  
SYSTEM**  
see page 74

- Real oak veneers
- Shaker panel designs
- Prepared for but not including varnish finish
- Solid core construction
- FD30 fire doors

A blend of modern and traditional, these beautiful oak shaker style doors are of exceptional quality and price. Outstanding, compared to similar alternatives on the market.

Manufactured with a solid engineered core and lipped with 15mm solid oak to allow for on site adjustment. Supplied unvarnished to allow for a choice of finish.

**Timber accessories**  
Architraves, linings and skirting.

See page 76.



**New** to JB Kind, a range of handles and latch packs

See page 75.



Timber veneers are a natural material and variations in the colour and graining should be expected. Colours depicted are representative only.

All images are shown finished for illustrative purposes only.

**MATCHING BI-FOLD DOORS**  
see pages 70-73



**SNOWDON**

Height / Width / Thickness mm Product Code

UNFINISHED		
1981	610 35	OSN020
1981	686 35	OSN023
1981	762 35	OSN026
1981	838 35	OSN029
2040	626 40	OSN0626
2040	726 40	OSN0726
2040	826 40	OSN0826

**UNFINISHED FIRE DOORS**

1981	686 44	OSN023FD30
1981	762 44	OSN026FD30
1981	838 44	OSN029FD30
2040	726 44	OSN0726FD30
2040	826 44	OSN0826FD30



**NEVIS**

Clear safety glass

Height / Width / Thickness mm Product Code

UNFINISHED		
1981	686 35	ONEV23
1981	762 35	ONEV26
1981	838 35	ONEV29
2040	726 40	ONEV726G
2040	826 40	ONEV826G



**RUSHMORE**

Height / Width / Thickness mm Product Code

UNFINISHED		
1981	610 35	ORUS20
1981	686 35	ORUS23
1981	762 35	ORUS26
1981	838 35	ORUS29
UNFINISHED FIRE DOORS		
1981	686 44	ORUS23FD30
1981	762 44	ORUS26FD30
1981	838 44	ORUS29FD30



**ETNA**

Height / Width / Thickness mm Product Code

UNFINISHED		
1981	610 35	OETN20
1981	686 35	OETN23
1981	762 35	OETN26
1981	838 35	OETN29
UNFINISHED FIRE DOORS		
1981	686 44	OETN23FD30
1981	762 44	OETN26FD30
1981	838 44	OETN29FD30



**FUJI**

Clear safety glass

Height / Width / Thickness mm Product Code

UNFINISHED		
1981	686 35	OFUJ23
1981	762 35	OFUJ26
1981	838 35	OFUJ29



**EIGER**

Height / Width / Thickness mm Product Code

UNFINISHED		
1981	610 35	OEIG20
1981	686 35	OEIG23
1981	762 35	OEIG26
1981	838 35	OEIG29
UNFINISHED FIRE DOORS		
1981	686 44	OEIG23FD30
1981	762 44	OEIG26FD30
1981	838 44	OEIG29FD30



**MATTERHORN**

Clear safety glass

Height / Width / Thickness mm Product Code

UNFINISHED		
1981	686 35	OMAT23
1981	762 35	OMAT26
1981	838 35	OMAT29





- Real oak veneers
- Supplied fully finished
- Solid core construction
- FD30 fire doors

SHERWOOD

# Simply Oak

See page 5 for Fire Door details.

Suitable for  
**POCKET  
DOOR  
SYSTEM**  
see page 74

Perfect for a classic style theme, Simply Oak's raised panel designs are complemented by a choice of matching glazed options.

'Value' really is the key word, as other alternatives on the market cannot match the quality varnish finish, solid engineered core construction or price.

Timber veneers are a natural material and variations in the colour and graining should be expected. Colours depicted are representative only.



**ARDEN**  
Clear safety glass

Height / Width / Thickness mm	Product Code
1981 762 35	<b>VS06L1P26G</b>
1981 838 35	<b>VS06L1P29G</b>

**Timber accessories**  
Architraves, linings and skirting.  
See page 76.

**New to JB Kind, a range of handles and latch packs**  
See page 75.



**CHARNWOOD**

Height / Width / Thickness mm	Product Code
1981 533 35	<b>VS02P19</b>
1981 610 35	<b>VS02P20</b>
1981 686 35	<b>VS02P23</b>
1981 762 35	<b>VS02P26</b>
1981 838 35	<b>VS02P29</b>
<b>PRE-FINISHED FIRE DOORS</b>	
1981 686 44	<b>VS02P23FD30</b>
1981 762 44	<b>VS02P26FD30</b>
1981 838 44	<b>VS02P29FD30</b>



**SHERWOOD**

Height / Width / Thickness mm	Product Code
1981 610 35	<b>VS04P20</b>
1981 686 35	<b>VS04P23</b>
1981 762 35	<b>VS04P26</b>
1981 838 35	<b>VS04P29</b>
<b>PRE-FINISHED FIRE DOORS</b>	
1981 686 44	<b>VS04P23FD30</b>
1981 762 44	<b>VS04P26FD30</b>
1981 838 44	<b>VS04P29FD30</b>



**GRIZEDALE**

Height / Width / Thickness mm	Product Code
1981 610 35	<b>VS06P20</b>
1981 686 35	<b>VS06P23</b>
1981 762 35	<b>VS06P26</b>
1981 838 35	<b>VS06P29</b>
<b>PRE-FINISHED FIRE DOORS</b>	
1981 686 44	<b>VS06P23FD30</b>
1981 762 44	<b>VS06P26FD30</b>
1981 838 44	<b>VS06P29FD30</b>



**DEAN**  
Clear safety glass

Height / Width / Thickness mm	Product Code
1981 686 35	<b>VS06L2P23G</b>
1981 762 35	<b>VS06L2P26G</b>
1981 838 35	<b>VS06L2P29G</b>



**GISBURN**  
Clear safety glass

Height / Width / Thickness mm	Product Code
1981 686 35	<b>VS010L23G</b>
1981 762 35	<b>VS010L26G</b>
1981 838 35	<b>VS010L29G</b>





# Gallery

See page 5 for Fire Door details.

Suitable for  
**POCKET  
DOOR  
SYSTEM**  
see page 74



- Light oak grained painted finish
- Contemporary flush grooved design
- BWF-CERTIFIRE FD30 fire doors (glazed FD30 available to order)
- FSC® chain of custody certified

You will find it hard to spot the difference between Gallery's superior painted finish and a real oak veneer – the perfect alternative that will suit the most modest budget.

Finished with hardwearing paint varnish, the design is enhanced with horizontal grooves to achieve a panelled effect. Constructed with oak veneered pine lippings that when planed during fitting, can be restored by repainting, or through the application of real oak veneers (available separately).

Colours depicted are representative only

**Timber accessories**  
Architraves, linings and skirting.  
See page 76.

**New to JB Kind, a range of handles and latch packs**  
See page 75.



**LOUVRE**  
Clear safety glass

**TATE**

**Bespoke Options:**  
Gallery door designs are available in alternative painted finishes and special sizes can be made to order. Minimum quantity may apply.

Call our Sales team on **01283 554197** to discuss your requirements.

Height / Width / Thickness mm	Product Code
<b>PRE-FINISHED</b>	
1981 686 35	<b>GLOU23</b>
1981 762 35	<b>GLOU26</b>
1981 838 35	<b>GLOU29</b>

Height / Width / Thickness mm	Product Code
<b>PRE-FINISHED</b>	
1981 610 35	<b>GTAT20</b>
1981 686 35	<b>GTAT23</b>
1981 762 35	<b>GTAT26</b>
1981 838 35	<b>GTAT29</b>
<b>PRE-FINISHED FIRE DOORS</b>	
1981 686 44	<b>GTAT23FD30</b>
1981 762 44	<b>GTAT26FD30</b>
1981 838 44	<b>GTAT29FD30</b>





- Ingenious combination of decorative wood veneers
- Supplied fully finished
- BWF CERTIFIRE FD30 fire doors (glazed FD30 available to order)
- FSC® chain of custody certified

**Why not create your own 'Inspiration' door!**  
Alternative veneer combinations, more creative designs and glazed options can be made to order. Call our Sales team on **01283 554197** to discuss your ideas.

**HARMONY**

# Inspiration

See page 5 for Fire Door details.

Suitable for  
**POCKET DOOR SYSTEM**  
see page 74



Inspiration doors are truly innovative, offering contemporary vision at an affordable price. Enjoy the striking contrast of zebrano and ebony veneers or the perfect partnership of walnut and oak. All designs are unique to JB Kind.

The quality construction, offers matching concealed lippings and a weighty framing within the whole door perimeter – to assist on site adjustment.



**UTOPIA**  
Walnut with Oak and Walnut inlays

Height / Width / Thickness mm	Product Code
<b>PRE-FINISHED</b>	
1981 610 35	IUTO20
1981 686 35	IUTO23
1981 762 35	IUTO26
1981 838 35	IUTO29
<b>PRE-FINISHED FIRE DOORS</b>	
1981 762 44	IUTO26FD30
1981 838 44	IUTO29FD30

Timber veneers are a natural material and variations in the colour and graining should be expected. Colours depicted are representative only.



**EBONY**



**ZEBRANO**



**NIRVANA**  
Walnut with Ash and Oak inlays

Height / Width / Thickness mm	Product Code
<b>PRE-FINISHED</b>	
1981 610 35	INIR20
1981 686 35	INIR23
1981 762 35	INIR26
1981 838 35	INIR29
<b>PRE-FINISHED FIRE DOORS</b>	
1981 762 44	INIR26FD30
1981 838 44	INIR29FD30



**AZURE**  
Ebony with Zebrano inlay

Height / Width / Thickness mm	Product Code
<b>PRE-FINISHED</b>	
1981 610 35	IAZU20
1981 686 35	IAZU23
1981 762 35	IAZU26
1981 838 35	IAZU29
<b>PRE-FINISHED FIRE DOORS</b>	
1981 686 44	IAZU23FD30
1981 762 44	IAZU26FD30
1981 838 44	IAZU29FD30



**PARADISE**  
Zebrano with Ebony inlay

Height / Width / Thickness mm	Product Code
<b>PRE-FINISHED</b>	
1981 610 35	IPAR20
1981 686 35	IPAR23
1981 762 35	IPAR26
1981 838 35	IPAR29
<b>PRE-FINISHED FIRE DOORS</b>	
1981 686 44	IPAR23FD30
1981 762 44	IPAR26FD30
1981 838 44	IPAR29FD30



**SERENITY**  
Oak with Ash inlays

Height / Width / Thickness mm	Product Code
<b>PRE-FINISHED</b>	
1981 610 35	ISER20
1981 686 35	ISER23
1981 762 35	ISER26
1981 838 35	ISER29
<b>PRE-FINISHED FIRE DOORS</b>	
1981 762 44	ISER26FD30
1981 838 44	ISER29FD30



**HARMONY**  
Oak with Walnut inlays

Height / Width / Thickness mm	Product Code
<b>PRE-FINISHED</b>	
1981 610 35	IHAR20
1981 686 35	IHAR23
1981 762 35	IHAR26
1981 838 35	IHAR29
<b>PRE-FINISHED FIRE DOORS</b>	
1981 762 44	IHAR26FD30
1981 838 44	IHAR29FD30



# Zodiac Flush

- Real wood veneers with contrasting grooves
- Supplied fully finished
- Solid core construction
- FD30 fire doors for solid and glazed models



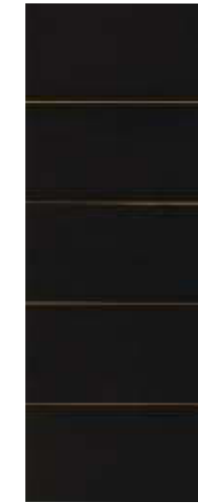
AQUARIUS

**Useful Tip:**  
Wooden doors are heavy – when hanging a door, always use three good quality hinges that incorporate steel washers or ball bearings.

Contemporary grooved flush doors that have a dazzling colour contrast style.

There are two great veneer options: oak with dark hardwood grooves and beads; or a delightful hardwood, stained to a dark walnut finish with light oak grooves and beads.

Timber veneers are a natural material and variations in the colour and graining should be expected. Colours depicted are representative only.



GEMINI

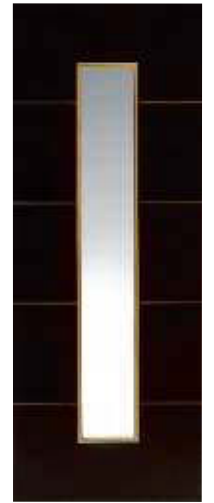
Height / Width / Thickness mm	Product Code
<b>PRE-FINISHED</b>	
1981 610 35	ZGEM20
1981 686 35	ZGEM23
1981 762 35	ZGEM26
1981 838 35	ZGEM29
<b>PRE-FINISHED FIRE DOORS</b>	
1981 686 44	ZGEM23FD30
1981 762 44	ZGEM26FD30
1981 838 44	ZGEM29FD30



LIBRA

Etched safety glass

Height / Width / Thickness mm	Product Code
<b>PRE-FINISHED</b>	
1981 686 35	ZLIB23
1981 762 35	ZLIB26
1981 838 35	ZLIB29



LIBRA FD30

Clear fire glass

Height / Width / Thickness mm	Product Code
<b>PRE-FINISHED FIRE DOORS</b>	
1981 762 44	ZLIB26FD30
1981 838 44	ZLIB29FD30



AQUARIUS

Height / Width / Thickness mm	Product Code
<b>PRE-FINISHED</b>	
1981 610 35	ZAQU20
1981 686 35	ZAQU23
1981 762 35	ZAQU26
1981 838 35	ZAQU29
<b>PRE-FINISHED FIRE DOORS</b>	
1981 686 44	ZAQU23FD30
1981 762 44	ZAQU26FD30
1981 838 44	ZAQU29FD30
2040 926 44	ZAQU926FD30



CAPRICORN

Etched safety glass

Height / Width / Thickness mm	Product Code
<b>PRE-FINISHED</b>	
1981 686 35	ZCAP23
1981 762 35	ZCAP26
1981 838 35	ZCAP29



CAPRICORN FD30

Clear fire glass

Height / Width / Thickness mm	Product Code
<b>PRE-FINISHED FIRE DOORS</b>	
1981 762 44	ZCAP26FD30
1981 838 44	ZCAP29FD30
2040 926 44	ZCAP926FD30



PISCES

Height / Width / Thickness mm	Product Code
<b>PRE-FINISHED</b>	
1981 610 35	ZPIS20
1981 686 35	ZPIS23
1981 762 35	ZPIS26
1981 838 35	ZPIS29
<b>PRE-FINISHED FIRE DOORS</b>	
1981 686 44	ZPIS23FD30
1981 762 44	ZPIS26FD30
1981 838 44	ZPIS29FD30



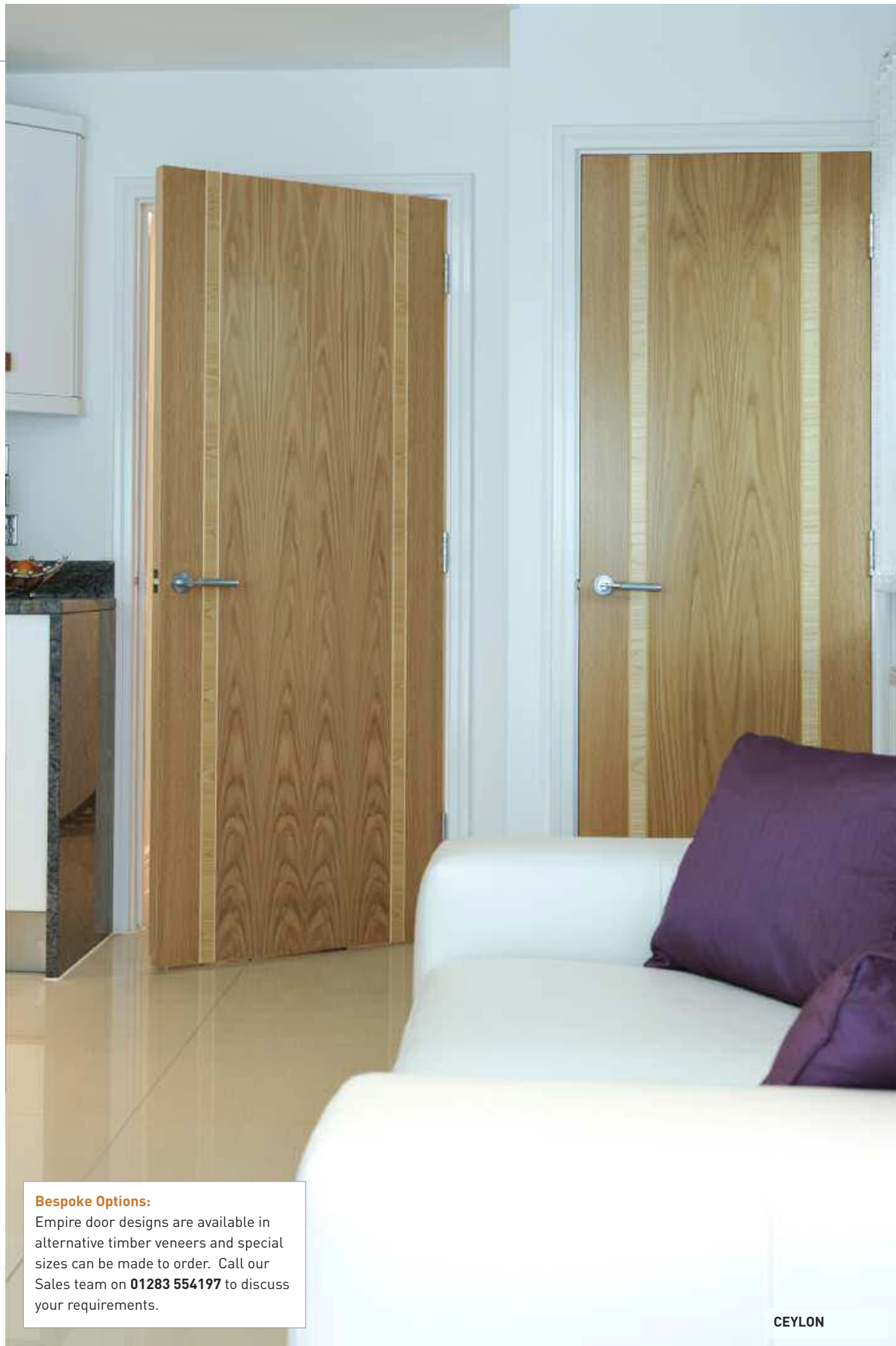
VIRGO

Clear safety glass

Height / Width / Thickness mm	Product Code
<b>PRE-FINISHED</b>	
1981 686 35	ZVIR23
1981 762 35	ZVIR26
1981 838 35	ZVIR29

Rebated door pairs are available to order.  
Matching door pairs cannot be guaranteed.





**Bespoke Options:**  
 Empire door designs are available in alternative timber veneers and special sizes can be made to order. Call our Sales team on **01283 554197** to discuss your requirements.

CEYLON

# Empire

See page 5 for Fire Door details.

Suitable for  
**POCKET  
 DOOR  
 SYSTEM**  
 see page 74



- Combination real wood veneers
- Supplied fully finished
- Bespoke options available
- BWF-CERTIFIRE FD30 fire doors (glazed FD30 available to order)

Unique and contemporary, Empire veneered flush doors will add distinction to any home interior. The superior varnish finish and clever use of alternative veneers, contrasting grooves and inlays, creates a truly stunning door range.

The quality construction, offers matching concealed lippings and a weighty framing within the whole door perimeter – to assist on site adjustment.



CEYLON\*\*

Height / Width / Thickness mm	Product Code
<b>PRE-FINISHED</b>	
1981 610 35	ECEY20
1981 686 35	ECEY23
1981 762 35	ECEY26
1981 838 35	ECEY29
<b>PRE-FINISHED FIRE DOORS</b>	
1981 686 44	ECEY23FD30
1981 762 44	ECEY26FD30
1981 838 44	ECEY29FD30



\* Beech stiles with ash centre and walnut castellated grooves  
 \*\* Oak with oak grooves and ash inlays



RHODESIA\*\*  
 Clear safety glass

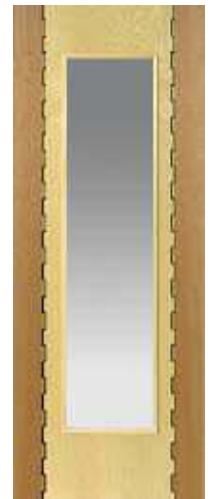
Height / Width / Thickness mm	Product Code
<b>PRE-FINISHED</b>	
1981 686 35	ERH023
1981 762 35	ERH026
1981 838 35	ERH029



HONDURAS\*

Height / Width / Thickness mm	Product Code
<b>PRE-FINISHED</b>	
1981 610 35	EHON20
1981 686 35	EHON23
1981 762 35	EHON26
1981 838 35	EHON29
<b>PRE-FINISHED FIRE DOORS</b>	
1981 686 44	EHON23FD30
1981 762 44	EHON26FD30
1981 838 44	EHON29FD30

Timber veneers are a natural material and variations in the colour and graining should be expected. Colours depicted are representative only.



BURMA\*  
 Clear safety glass

Height / Width / Thickness mm	Product Code
<b>PRE-FINISHED</b>	
1981 686 35	EBUR23
1981 762 35	EBUR26
1981 838 35	EBUR29



**Bespoke Options:**  
Special sizes and alternative groove patterns are available for some of our Limelight door designs. Call our Sales team on **01283 554197** to discuss your requirements.

**ELEKTRA**

# Limelight

See page 5 for Fire Door details.

Suitable for  
**POCKET  
DOOR  
SYSTEM**  
see page 74



- Coated with excellent white primer, ready for top coat finish
- MDF faces with feature grooves
- FD30 fire doors for solid and glazed models
- FSC® chain of custody certified

White primed contemporary doors that love being in the limelight. A stylish collection of innovative designs, alongside the most popular styles currently offered in natural veneers.

Glazed fire doors are available from stock for the 'Dominion' and 'Barbican', ready glazed with Pyrodur Plus.

Limelight continues overleaf



**ASTER**

Height / Width / Thickness mm	Product Code
<b>PRIMED</b>	
1981 610 35	<b>LAST20</b>
1981 686 35	<b>LAST23</b>
1981 762 35	<b>LAST26</b>
1981 838 35	<b>LAST29</b>
<b>PRIMED FIRE DOORS</b>	
1981 686 44	<b>LAST23FD30</b>
1981 762 44	<b>LAST26FD30</b>
1981 838 44	<b>LAST29FD30</b>



**ELEKTRA**

Height / Width / Thickness mm	Product Code
<b>PRIMED</b>	
1981 610 35	<b>LELE20</b>
1981 686 35	<b>LELE23</b>
1981 762 35	<b>LELE26</b>
1981 838 35	<b>LELE29</b>
<b>PRIMED FIRE DOORS</b>	
1981 686 44	<b>LELE23FD30</b>
1981 762 44	<b>LELE26FD30</b>
1981 838 44	<b>LELE29FD30</b>



**ECLIPSE**

Height / Width / Thickness mm	Product Code
<b>PRIMED</b>	
1981 610 35	<b>LECL20</b>
1981 686 35	<b>LECL23</b>
1981 762 35	<b>LECL26</b>
1981 838 35	<b>LECL29</b>
<b>PRIMED FIRE DOORS</b>	
1981 686 44	<b>LECL23FD30</b>
1981 762 44	<b>LECL26FD30</b>
1981 838 44	<b>LECL29FD30</b>



**ORIOLE**

Clear safety glass

Height / Width / Thickness mm	Product Code
<b>PRIMED</b>	
1981 686 35	<b>LORI23</b>
1981 762 35	<b>LORI26</b>
1981 838 35	<b>LORI29</b>



**MISTRAL WHITE**

Height / Width / Thickness mm	Product Code
<b>PRIMED</b>	
1981 610 35	<b>LMIS20</b>
1981 686 35	<b>LMIS23</b>
1981 762 35	<b>LMIS26</b>
1981 838 35	<b>LMIS29</b>
2040 526 40	<b>LMIS526</b>
2040 626 40	<b>LMIS626</b>
2040 726 40	<b>LMIS726</b>
2040 826 40	<b>LMIS826</b>
<b>PRIMED FIRE DOORS</b>	
1981 686 44	<b>LMIS23FD30</b>
1981 762 44	<b>LMIS26FD30</b>
1981 838 44	<b>LMIS29FD30</b>
2040 726 44	<b>LMIS726FD30</b>
2040 826 44	<b>LMIS826FD30</b>
2040 926 44	<b>LMIS926FD30</b>

**MATCHING BI-FOLD DOORS**  
see pages 70-73

See pages 19 & 31 for Walnut & Oak



**MISTRAL WHITE GLAZED**

Flush beaded, Clear safety glass

Height / Width / Thickness mm	Product Code
<b>PRIMED</b>	
1981 686 35	<b>LMIS23G</b>
1981 762 35	<b>LMIS26G</b>
1981 838 35	<b>LMIS29G</b>
2040 626 40	<b>LMIS626G</b>
2040 726 40	<b>LMIS726G</b>
2040 826 40	<b>LMIS826G</b>



**IMPERIAL**

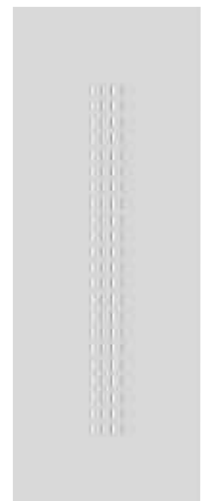
Height / Width / Thickness mm	Product Code
<b>PRIMED</b>	
1981 610 35	<b>LIMP20</b>
1981 686 35	<b>LIMP23</b>
1981 762 35	<b>LIMP26</b>
1981 838 35	<b>LIMP29</b>
<b>PRIMED FIRE DOORS</b>	
1981 686 44	<b>LIMP23FD30</b>
1981 762 44	<b>LIMP26FD30</b>
1981 838 44	<b>LIMP29FD30</b>



**REGENT**

Clear safety glass

Height / Width / Thickness mm	Product Code
<b>PRIMED</b>	
1981 686 35	<b>LREG23</b>
1981 762 35	<b>LREG26</b>
1981 838 35	<b>LREG29</b>



**CRITERION**

Height / Width / Thickness mm	Product Code
<b>PRIMED</b>	
1981 610 35	<b>LCRI20</b>
1981 686 35	<b>LCRI23</b>
1981 762 35	<b>LCRI26</b>
1981 838 35	<b>LCRI29</b>
<b>PRIMED FIRE DOORS</b>	
1981 686 44	<b>LCRI23FD30</b>
1981 762 44	<b>LCRI26FD30</b>
1981 838 44	<b>LCRI29FD30</b>





MISTRAL WHITE GLAZED



DOMINION

**New** to JB Kind,  
a range of handles  
and latch packs

See page 75.



APOLLO

Height / Width / Product  
Thickness mm Code

PRIMED		
1981 610 35	LAP020	
1981 686 35	LAP023	
1981 762 35	LAP026	
1981 838 35	LAP029	
PRIMED FIRE DOORS		
1981 686 44	LAP023FD30	
1981 762 44	LAP026FD30	
1981 838 44	LAP029FD30	



BARBICAN

Etched safety glass or  
etched fire glass on FD30

Height / Width / Product  
Thickness mm Code

PRIMED		
1981 686 35	LBAR23	
1981 762 35	LBAR26	
1981 838 35	LBAR29	
PRIMED FIRE DOORS		
1981 762 44	LBAR26FD30	
1981 838 44	LBAR29FD30	



FORTUNE

Height / Width / Product  
Thickness mm Code

PRIMED		
1981 610 35	LFOR20	
1981 686 35	LFOR23	
1981 762 35	LFOR26	
1981 838 35	LFOR29	
PRIMED FIRE DOORS		
1981 686 44	LFOR23FD30	
1981 762 44	LFOR26FD30	
1981 838 44	LFOR29FD30	



LYRIC

Height / Width / Product  
Thickness mm Code

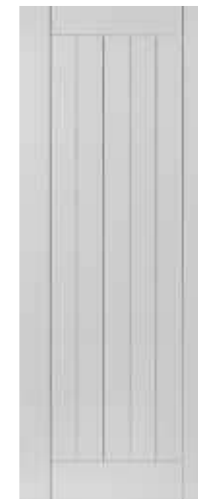
PRIMED		
1981 610 35	LLYR20	
1981 686 35	LLYR23	
1981 762 35	LLYR26	
1981 838 35	LLYR29	
PRIMED FIRE DOORS		
1981 686 44	LLYR23FD30	
1981 762 44	LLYR26FD30	
1981 838 44	LLYR29FD30	



NOVELLO

Height / Width / Product  
Thickness mm Code

PRIMED		
1981 610 35	LNOV20	
1981 686 35	LNOV23	
1981 762 35	LNOV26	
1981 838 35	LNOV29	
PRIMED FIRE DOORS		
1981 762 44	LNOV26FD30	
1981 838 44	LNOV29FD30	



SAVOY

Height / Width / Product  
Thickness mm Code

PRIMED		
1981 610 35	LSAV20	
1981 686 35	LSAV23	
1981 762 35	LSAV26	
1981 838 35	LSAV29	
PRIMED FIRE DOORS		
1981 762 44	LSAV26FD30	
1981 838 44	LSAV29FD30	



PHOENIX

Clear safety glass

Height / Width / Product  
Thickness mm Code

PRIMED		
1981 686 35	LPH023	
1981 762 35	LPH026	
1981 838 35	LPH029	



ADELPHI

Height / Width / Product  
Thickness mm Code

PRIMED		
1981 610 35	LADE20	
1981 686 35	LADE23	
1981 762 35	LADE26	
1981 838 35	LADE29	
PRIMED FIRE DOORS		
1981 686 44	LADE23FD30	
1981 762 44	LADE26FD30	
1981 838 44	LADE29FD30	

**MATCHING  
BI-FOLD  
DOORS**  
see pages 70-73



ARCADIAN

Clear safety glass

Height / Width / Product  
Thickness mm Code

PRIMED		
1981 686 35	LARC23	
1981 762 35	LARC26	
1981 838 35	LARC29	



DOMINION

Etched safety glass or  
etched fire glass on FD30

Height / Width / Product  
Thickness mm Code

PRIMED		
1981 686 35	LDOM23	
1981 762 35	LDOM26	
1981 838 35	LDOM29	
PRIMED FIRE DOORS		
1981 762 44	LDOM26FD30	
1981 838 44	LDOM29FD30	



**Useful Tip:**  
For a better finish on any unfinished door, we recommend a light sanding to remove any nibs or marks prior to finishing.

JAMAICA

# Calypso

See page 5 for Fire Door details.

Suitable for  
**POCKET  
DOOR  
SYSTEM**  
see page 74



- New designs for 2015
- White primed, ready for top coat finish
- Solid core construction
- FD30 fire doors
- FSC® chain of custody certified

Light and refreshing, the Calypso range offers a selection of attractive shaker panel style doors.

Take a trip back in time with our new retro revival Aurora door design. Enjoy the contemporary slant that has been given to this iconic 'sunshine' door style, made popular in the 1950's and 60's.



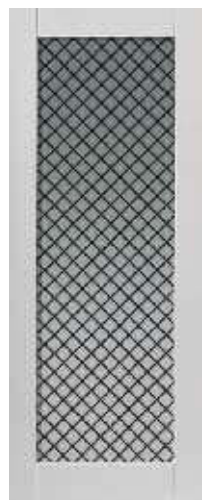
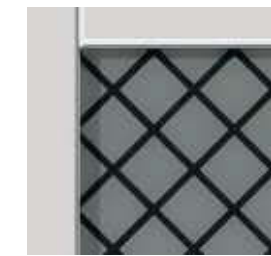
**New** AURORA

Height / Width / Thickness mm	Product Code
1981 686 35	CAUR23
1981 762 35	CAUR26
1981 838 35	CAUR29



**New** AURORA GLAZED  
Clear safety glass

Height / Width / Thickness mm	Product Code
1981 762 35	CAUR26G



**New** TOBAGO CHECK  
Clear safety glass

Height / Width / Thickness mm	Product Code
1981 762 35	CTOBCE26



**New** to JB Kind, a range of handles and latch packs

See page 75.



ANTIGUA

Height / Width / Thickness mm	Product Code
1981 610 35	CANTI20
1981 686 35	CANTI23
1981 762 35	CANTI26
1981 838 35	CANTI29

PRIMED FIRE DOORS

1981 686 44	CANTI23FD30
1981 762 44	CANTI26FD30
1981 838 44	CANTI29FD30

**MATCHING BI-FOLD DOORS**  
see pages 70-73



TOBAGO  
Clear safety glass

Height / Width / Thickness mm	Product Code
1981 686 35	CTOB23
1981 762 35	CTOB26
1981 838 35	CTOB29

Calypso continues overleaf







**MONTSERRAT**



**TRINIDAD**

Whether you wish to paint your Calypso doors a different colour - light and dark greys are very popular - or finish them white, you'll be able to find a style that suits your interior design theme.

Constructed with a solid pine core and faced with MDF, we are sure you will enjoy the excellent quality and value for money.



**BARBADOS**

Height / Width / Thickness mm	Product Code
<b>PRIMED</b>	
1981 610 35	<b>CBAR20</b>
1981 686 35	<b>CBAR23</b>
1981 762 35	<b>CBAR26</b>
1981 838 35	<b>CBAR29</b>
<b>PRIMED FIRE DOORS</b>	
1981 686 44	<b>CBAR23FD30</b>
1981 762 44	<b>CBAR26FD30</b>
1981 838 44	<b>CBAR29FD30</b>



**DOMINICA**  
Clear safety glass

Height / Width / Thickness mm	Product Code
<b>PRIMED</b>	
1981 686 35	<b>CDOMI23</b>
1981 762 35	<b>CDOMI26</b>
1981 838 35	<b>CDOMI29</b>



**JAMAICA**

Height / Width / Thickness mm	Product Code
<b>PRIMED</b>	
1981 610 35	<b>CJAM20</b>
1981 686 35	<b>CJAM23</b>
1981 762 35	<b>CJAM26</b>
1981 838 35	<b>CJAM29</b>
<b>PRIMED FIRE DOORS</b>	
1981 686 44	<b>CJAM23FD30</b>
1981 762 44	<b>CJAM26FD30</b>
1981 838 44	<b>CJAM29FD30</b>



**TRINIDAD**  
Clear safety glass

Height / Width / Thickness mm	Product Code
<b>PRIMED</b>	
1981 686 35	<b>CTRI23</b>
1981 762 35	<b>CTRI26</b>
1981 838 35	<b>CTRI29</b>



**MONTSERRAT**

Height / Width / Thickness mm	Product Code
<b>PRIMED</b>	
1981 610 35	<b>CMON20</b>
1981 686 35	<b>CMON23</b>
1981 762 35	<b>CMON26</b>
1981 838 35	<b>CMON29</b>
<b>PRIMED FIRE DOORS</b>	
1981 686 44	<b>CMON23FD30</b>
1981 762 44	<b>CMON26FD30</b>
1981 838 44	<b>CMON29FD30</b>

**MATCHING  
BI-FOLD  
DOORS**  
see pages 70-73



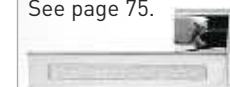
**CAYMAN**  
Clear safety glass

Height / Width / Thickness mm	Product Code
<b>PRIMED</b>	
1981 686 35	<b>CCAY23</b>
1981 762 35	<b>CCAY26</b>
1981 838 35	<b>CCAY29</b>



**New** to JB Kind,  
a range of handles  
and latch packs

See page 75.



- New designs for 2015
- White primed, ready for top coat finish
- FD30 fire doors for solid and glazed models
- FSC® chain of custody certified



QUATTRO

**Useful Tip:**  
When finishing a primed glazed door, ensure that the paint and peel protective film is kept in place, until the door is completely dry.

# Moulded Panel

See page 5 for Fire Door details.

Suitable for  
**POCKET  
DOOR  
SYSTEM**  
see page 74



Premium white primed moulded panel doors, ready for a choice of paint finish. Functional, cost effective doors in a variety of designs and FD30 fire door options. All glazed doors are supplied with a protective 'Paint & Peel' film.

Moulded Panel doors are especially vulnerable to constant high humidity and care must be taken not to fit in new properties before plasterwork etc. has been allowed to dry out sufficiently.

**New** to JB Kind, a range of handles and latch packs

See page 75.



**New** QUATTRO  
Smooth

Height / Width / Thickness mm	Product Code
<b>PRIMED</b>	
1981 610 35	QUA20
1981 686 35	QUA23
1981 762 35	QUA26
1981 838 35	QUA29
<b>PRIMED FIRE DOORS</b>	
1981 686 44	QUA23FD30
1981 762 44	QUA26FD30
1981 838 44	QUA29FD30



**New** QUATTRO GLAZED  
Smooth, Flush beading, Clear safety glass

Height / Width / Thickness mm	Product Code
<b>PRIMED</b>	
1981 686 35	QUA4L23
1981 762 35	QUA4L26
1981 838 35	QUA4L29



**DECCA**  
Grained, Clear safety glass with etched lines, Flush beading

Height / Width / Thickness mm	Product Code
<b>PRIMED</b>	
1981 686 35	DEC23
1981 762 35	DEC26
1981 838 35	DEC29



**COTTAGE 1 LIGHT**  
Grained, Clear safety glass with etched lines, Flush beading

Height / Width / Thickness mm	Product Code
<b>PRIMED</b>	
1981 686 35	MCOT51L23
1981 762 35	MCOT51L26
1981 838 35	MCOT51L29



**COTTAGE 5**  
Grained

Height / Width / Thickness mm	Product Code
<b>PRIMED</b>	
1981 610 35	MCOT520
1981 686 35	MCOT523
1981 762 35	MCOT526
1981 838 35	MCOT529
<b>PRIMED FIRE DOORS</b>	
1981 686 44	MCOT523FD30
1981 762 44	MCOT526FD30
1981 838 44	MCOT529FD30



**CAPRICE**  
Grained

Height / Width / Thickness mm	Product Code
<b>PRIMED</b>	
1981 610 35	CAP20
1981 686 35	CAP23
1981 762 35	CAP26
1981 838 35	CAP29
2040 726 40	CAP726
2040 826 40	CAP826
<b>PRIMED FIRE DOORS</b>	
1981 762 44	CAP26FD30
1981 838 44	CAP29FD30
2040 726 44	CAP726FD30
2040 826 44	CAP826FD30



**ANDORRA**  
Grained, Etched safety glass Flush beading

Height / Width / Thickness mm	Product Code
<b>PRIMED</b>	
1981 686 35	CAPAND23
1981 762 35	CAPAND26
1981 838 35	CAPAND29

Moulded Panel continues overleaf





**EDWARDIAN**  
Grained

Height / Width / Thickness mm	Product Code
<b>PRIMED</b>	
1981 533 35	ED19*
1981 610 35	ED20
1981 686 35	ED23
1981 762 35	ED26
1981 838 35	ED29
2032 813 35	ED28
<b>PRIMED FIRE DOORS</b>	
1981 762 44	EDHH26
1981 838 44	EDHH29
2032 813 44	EDHH28

\*2 Panel



**CANTERBURY 2 LT FD30**  
Grained, Pyran 'S' clear fire glass  
Raised beading

Height / Width / Thickness mm	Product Code
<b>PRIMED GRAINED FIRE DOORS</b>	
1981 762 44	CANGL26FD30
1981 838 44	CANGL29FD30



**CANTERBURY**  
Grained or Smooth

Height / Width / Thickness mm	Product Code
<b>PRIMED GRAINED</b>	
1981 457 35	CAN16*
1981 533 35	CAN19*
1981 610 35	CAN20
1981 686 35	CAN23
1981 711 35	CAN24
1981 762 35	CAN26
1981 838 35	CAN29
2032 813 35	CAN28
2040 526 40	CAN526
2040 626 40	CAN626
2040 726 40	CAN726
2040 826 40	CAN826
<b>PRIMED GRAINED FIRE DOORS</b>	
1981 610 44	CANHH20
1981 686 44	CANHH23
1981 762 44	CANHH26
1981 838 44	CANHH29
2032 813 44	CANHH28
2040 726 44	CANHH726
2040 826 44	CANHH826
2040 926 44	CANHH926

Height / Width / Thickness mm	Product Code
<b>PRIMED SMOOTH</b>	
1981 610 35	SMCAN20
1981 686 35	SMCAN23
1981 762 35	SMCAN26
1981 838 35	SMCAN29
<b>PRIMED SMOOTH FIRE DOORS</b>	
1981 610 44	SMCANHH20
1981 686 44	SMCANHH23
1981 762 44	SMCANHH26
1981 838 44	SMCANHH29
2032 813 44	SMCANHH28

\*2 Panel



**COLONIST**  
Grained or Smooth

Height / Width / Thickness mm	Product Code
<b>PRIMED GRAINED</b>	
1981 381 35	COL13**
1981 457 35	COL16**
1981 533 35	COL19**
1981 610 35	COL20
1981 686 35	COL23
1981 711 35	COL24
1981 762 35	COL26
1981 838 35	COL29
2032 813 35	COL28
2040 526 40	COL526
2040 626 40	COL626
2040 726 40	COL726
2040 826 40	COL826
<b>PRIMED GRAINED FIRE DOORS</b>	
1981 610 44	COLHH20
1981 686 44	COLHH23
1981 762 44	COLHH26
1981 838 44	COLHH29
2032 813 44	COLHH28
2040 726 44	COLHH726
2040 826 44	COLHH826
2040 926 44	COLHH926

Height / Width / Thickness mm	Product Code
<b>PRIMED SMOOTH</b>	
1981 457 35	SMCOL16**
1981 533 35	SMCOL19**
1981 610 35	SMCOL20
1981 686 35	SMCOL23
1981 762 35	SMCOL26
1981 838 35	SMCOL29
2032 813 35	SMCOL28
<b>PRIMED SMOOTH FIRE DOORS</b>	
1981 686 44	SMCOLHH23
1981 762 44	SMCOLHH26
1981 838 44	SMCOLHH29
2032 813 44	SMCOLHH28

\*\*3 Panel



**FARO**  
Grained, Clear safety glass  
Flush beading

Height / Width / Thickness mm	Product Code
<b>PRIMED</b>	
1981 686 35	CAPFAR23
1981 762 35	CAPFAR26
1981 838 35	CAPFAR29



**FARO FD30**  
Grained, Pyrodur clear etched fire glass, Raised beading

Height / Width / Thickness mm	Product Code
<b>PRIMED</b>	
1981 762 44	CAPFAR26FD30
1981 838 44	CAPFAR29FD30



**CLASSIQUE**  
Grained

Height / Width / Thickness mm	Product Code
<b>PRIMED</b>	
1981 533 35	CLA19
1981 610 35	CLA20
1981 686 35	CLA23
1981 711 35	CLA24
1981 762 35	CLA26
1981 838 35	CLA29
2032 813 35	CLA28
2040 726 40	CLA726
2040 826 40	CLA826
<b>PRIMED FIRE DOORS</b>	
1981 686 44	CLAHH23
1981 762 44	CLAHH26
1981 838 44	CLAHH29



**CLASSIQUE 6 LT**  
Grained, Clear safety glass  
Flush beading

Height / Width / Thickness mm	Product Code
<b>PRIMED</b>	
1981 686 35	CLAGLS23
1981 762 35	CLAGLS26
1981 838 35	CLAGLS29
2032 813 35	CLAGLS28



**CLASSIQUE 6 LT PAIRS**  
Grained, Clear safety glass  
Flush beading

Height / Width / Thickness mm	Product Code
<b>PRIMED</b>	
1981 1220 35	CLAGLSPR40



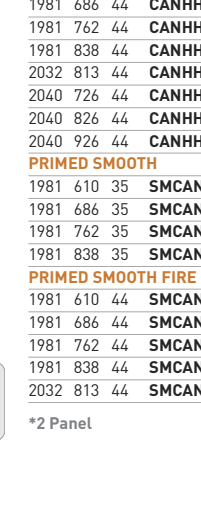
**EDWARDIAN 2 LT**  
Grained, Etched safety glass  
Flush beading

Height / Width / Thickness mm	Product Code
<b>PRIMED</b>	
1981 686 35	EDGLS23
1981 762 35	EDGLS26
1981 838 35	EDGLS29



**CANTERBURY 2 LT**  
Grained with etched safety glass  
or Smooth with clear safety glass,  
Flush beading

Height / Width / Thickness mm	Product Code
<b>PRIMED GRAINED - ETCHED</b>	
1981 686 35	CANGL23
1981 762 35	CANGL26
1981 838 35	CANGL29
2032 813 35	CANGL28
2040 726 40	CANGL726
<b>PRIMED SMOOTH - CLEAR</b>	
1981 686 35	SMCANGLC23
1981 762 35	SMCANGLC26
1981 838 35	SMCANGLC29



**COLONIST**  
Grained or Smooth

Height / Width / Thickness mm	Product Code
<b>PRIMED GRAINED</b>	
1981 457 35	CAN16*
1981 533 35	CAN19*
1981 610 35	CAN20
1981 686 35	CAN23
1981 711 35	CAN24
1981 762 35	CAN26
1981 838 35	CAN29
2032 813 35	CAN28
2040 526 40	CAN526
2040 626 40	CAN626
2040 726 40	CAN726
2040 826 40	CAN826
<b>PRIMED GRAINED FIRE DOORS</b>	
1981 610 44	CANHH20
1981 686 44	CANHH23
1981 762 44	CANHH26
1981 838 44	CANHH29
2032 813 44	CANHH28
2040 726 44	CANHH726
2040 826 44	CANHH826
2040 926 44	CANHH926

\*2 Panel

**New** to JB Kind,  
a range of handles  
and latch packs

See page 75.



Brushed chrome caming  
glazing cassettes.



**DECIMA**  
Grained  
Clear bevelled safety glass

Height / Width / Thickness mm	Product Code
<b>PRIMED</b>	
1981 686 35	CCAPDEC23
1981 762 35	CCAPDEC26
1981 838 35	CCAPDEC29

- New for 2015
- Bi-fold options that match our most popular door designs
- Pre-finished and unfinished options
- FSC® chain of custody certified for selected door designs



For further product information, please refer to the matching standard door equivalent, as highlighted.

**MISTRAL OAK BI-FOLD**

# Bi-folds

By popular demand, we are pleased to introduce our new range of bi-folding doors – the perfect space saving door solution. Style does not have to be compromised with JB Kind's new bi-fold door range.

Taking up half the space of a regular door, bi-folds are ideal for ensuites, cupboards and wardrobes. You also have the option to put two sets together as a pair, creating a convenient room divider. Available in a selection of our most popular door designs, so that you can suite door styles throughout your home.

Easy to install into existing frames, our bi-folds are supplied ready hinged with pivots, brackets, a sliding track and full instructions.

Timber veneers are a natural material and variations in the colour and graining should be expected. Colours depicted are representative only.



**New THAMES ORIGINAL BI-FOLD\***  
Grooved face

Height / Width / Thickness mm	Product Code
1981 762 35	<b>OTHABF26</b>

See page 41 for matching doors



**New SNOWDON BI-FOLD\***

Height / Width / Thickness mm	Product Code
1981 762 35	<b>OSNOBF26</b>

See page 47 for matching doors



**New ETNA BI-FOLD\***

Height / Width / Thickness mm	Product Code
1981 762 35	<b>OETNBF26</b>

See page 47 for matching doors



**New FUJI BI-FOLD\***  
Clear safety glass

Height / Width / Thickness mm	Product Code
1981 762 35	<b>OFUJBF26</b>

See page 47 for matching doors



**New THAMES II BI-FOLD\***  
Recessed grooved face

Height / Width / Thickness mm	Product Code
1981 762 35	<b>MK20THBF26</b>

See page 41 for matching doors



**New MISTRAL OAK\* BI-FOLD**

Height / Width / Thickness mm	Product Code
1981 762 35	<b>OMISBF26</b>

See page 31 for matching doors



**New MISTRAL WHITE BI-FOLD**

Height / Width / Thickness mm	Product Code
1981 762 35	<b>LMISBF26</b>

See page 59 for matching doors

Doors marked with † are not FSC certified



Bi-folds continues overleaf



Please note that the door opening sizes are listed. The actual bi-folds supplied are slightly smaller than the opening sizes to accommodate tracking.





**CANTERBURY BI-FOLD**

For further product information, please refer to the matching standard door equivalent, as highlighted.

Please note that the door opening sizes are listed. The actual bi-folds supplied are slightly smaller than the opening sizes to accommodate tracking.



**AXIS WHITE BI-FOLD**

Height / Width / Thickness mm	Product Code
PRIMED	
1981 762 35	SAXIBF26

See page 15 for matching doors



**CANTERBURY BI-FOLD**  
Grained

Height / Width / Thickness mm	Product Code
PRIMED	
1981 610 35	CANBF20
1981 762 35	CANBF26

See page 69 for matching doors



**CANTERBURY GLAZED BI-FOLD**  
Grained, Etched safety glass  
Flush beading

Height / Width / Thickness mm	Product Code
PRIMED	
1981 762 35	CANBFGT26

See page 69 for matching doors



**COLONIST BI-FOLD**  
Grained

Height / Width / Thickness mm	Product Code
PRIMED	
1981 762 35	COLBF26
1981 914 35	COLBF30

See page 69 for matching doors



**ANTIGUA BI-FOLD**

Height / Width / Thickness mm	Product Code
PRIMED	
1981 762 35	CANTIBF26

See page 63 for matching doors



**TOBAGO BI-FOLD**  
Clear safety glass

Height / Width / Thickness mm	Product Code
PRIMED	
1981 762 35	CTOBBF26

See page 63 for matching doors



**MONTERRAT BI-FOLD**

Height / Width / Thickness mm	Product Code
PRIMED	
1981 762 35	CMONBF26

See page 65 for matching doors



**CAYMAN BI-FOLD**  
Clear safety glass

Height / Width / Thickness mm	Product Code
PRIMED	
1981 762 35	CCAYBF26

See page 65 for matching doors



**AXIS WHITE GLAZED BI-FOLD**  
Clear safety glass

Height / Width / Thickness mm	Product Code
PRIMED	
1981 762 35	SAXIBFG26

See page 15 for matching doors



**ADELPHI BI-FOLD**

Height / Width / Thickness mm	Product Code
PRIMED	
1981 762 35	LADEBF26

See page 61 for matching doors



**CLASSIQUE BI-FOLD**  
Grained

Height / Width / Thickness mm	Product Code
PRIMED	
1981 610 35	CLABF20
1981 762 35	CLABF26

See page 68 for matching doors

# Pocket Door Systems



## Space saving pocket door solutions that bring contemporary style to your home.

Considering a pocket door system? Then you will be pleased to know that almost all of JB Kind's internal doors are suitable for use as a pocket door. New for 2015, JB Kind can now supply pocket framing systems to suit the different sized doors that we offer.

Available for both single and double door situations in a selection of sizes, supported with a choice of accessories (automatic door closer, damper unit and double simultaneous opening and closing system).



Easy to install, rigid framing system which is supplied pre-assembled - fitted in half the time of other brands.

For more information on our pocket door systems, call our Sales team on **01283 554197** to discuss your requirements.

# Door Furniture

A stylish selection of contemporary door furniture – the perfect partner for your JB Kind doors.



## Latch Packs

Enjoy the convenience of a JB Kind latch pack with everything that you need to fit your door in one box. Choose from three attractive lever handle designs, supplied as a pair with smartlatch and three quality ball bearing hinges.

With a 10 year parts and mechanism guarantee, the premium stainless steel and zinc diecast construction provides that all important peace of mind. The revolutionary push button privacy packs, offer an easy 'one push' solution for locking bathroom doors safely and securely.



LATCH PACKS	DRIFT	CURL	TUBE
Standard latch pack	IDRILP	ICURLP	ITUBLP
Privacy latch pack	IDRIPP	ICURPP	ITUBPP

## Designer Lever Collection

A luxurious collection of premium quality Italian manufactured lever handles that truly exude style and class.

Available in either a polished or satin chrome finish, you can choose from three contemporary lever designs that are supplied in pairs. For privacy, a bathroom turn/release is also available in both a polished or satin chrome finish.



Latches and hinges are available separately

### BATHROOM TURN/RELEASE



Polished chrome      Satin chrome

DESIGNER LEVER COLLECTION	MODA	COEVO	APPELLO	BATHROOM TURN/RELEASE
Polished chrome	IMODPC	ICOEPC	IAPPC	IPRIVPC
Satin chrome	IMODSC	ICOESC	IAPPC	IPRIVSC
Polished chrome with white crystal effect			IAPPCR	



**DRIFT**  
Polished chrome & satin nickel finish



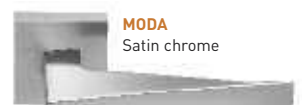
**CURL**  
Polished chrome & satin nickel finish



**TUBE**  
Satin chrome finish



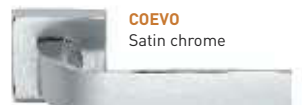
**MODA**  
Polished chrome



**MODA**  
Satin chrome



**COEVO**  
Polished chrome



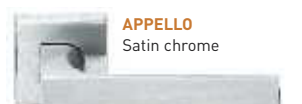
**COEVO**  
Satin chrome



**APPELLO**  
Polished chrome



**APPELLO**  
Polished chrome with white crystal effect



**APPELLO**  
Satin chrome



# Internal Accessories

## Oak Door Linings, Architraves and Skirtings – Boxed Sets

Constructed with a solid engineered core for added stability and faced with oak veneer. Each set is sufficient for most standard door sizes, available both varnished and unvarnished.



### LININGS

Size (mm)	Varnished	Unvarnished
30 x 108	<b>ODL108V</b>	<b>ODL108</b>
30 x 133	<b>ODL133V</b>	<b>ODL133</b>

Each pack is sufficient for a single door

Contents per box:  
2 pieces 2100mm - Jamb  
1 piece 1050mm - Head  
Stops - 12 x 45mm, 2 pieces 2100mm, 1 piece 1050mm



### ARCHITRAVES

Size (mm)	Varnished	Unvarnished
18 x 69	<b>OARC69V</b>	<b>OARC69</b>

Each pack is sufficient for both sides of one door

Contents per box:  
4 pieces 2200mm  
2 pieces 1200mm lengths



### SKIRTING

Size (mm)	Varnished	Unvarnished
18 x 144	<b>OSK144V</b>	<b>OSK144</b>

Contents per box:  
4 pieces 3000mm lengths

## Modern Architrave

The perfect complement for your doors. Veneered on MDF and supplied with sufficient lengths to fit both sides of most standard internal door sizes.



### MODERN ARCHITRAVE

Size (mm)	Varnished	Unvarnished
-----------	-----------	-------------

### ARCHITRAVES (box quantity for 2 sides single leaf)

Product Code	Product Code
<b>OCLRA70V</b>	<b>OCLRA70</b>

Contents per box:  
4 pieces 2200mm - Jamb  
2 pieces 1100mm - Head

## Sovereign Sets

The ultimate embellishment for enhancing oak or painted internal doors in both unfinished and prefinished oak, veneered on MDF.



Each box contains sufficient for one side of a door and includes 2 jamb, 1 head, 2 corner blocks and 2 plinth blocks.

We offer two different head sizes to suit both single leaves and pairs.

## Pair Maker

Oak style T-section pair maker.

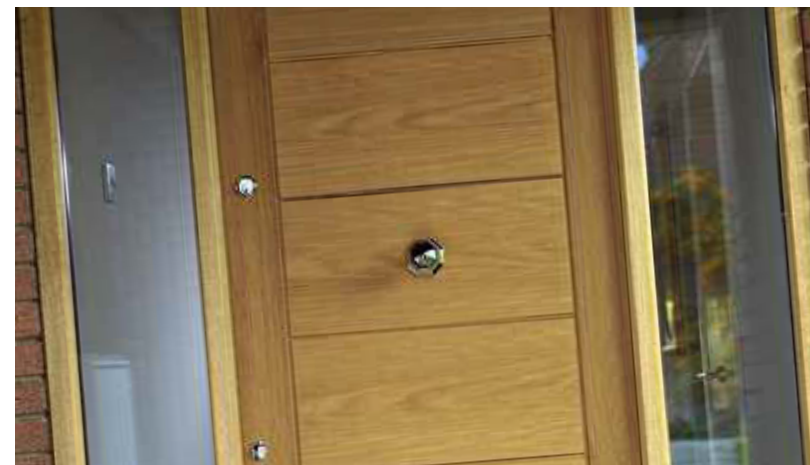


### PAIR MAKER

Size (mm)	Product Code
-----------	--------------

UNVARNISHED  
2100 **KSKPAIRMAKER**

# External Accessories



## Weatherboards

A weatherboard is an essential requirement wherever doors are exposed to rainfall.

### OAK WEATHERBOARD

Size (mm)	Timber	Product Code
915	Oak	<b>WB029</b>



### DOOR FRAMES



### MULLION

Great value exclusive external door frame kits, manufactured using solid oak (unfinished). Laminated construction for extra stability and material economy without losing authenticity.

Lengths supplied are sufficient for most standard door sizes, including a version for pair or sidelight configurations (ODF9457W). A separate boxed mullion is available where a rebate both sides is required for sidelights (OML9468). All components require cutting to size.

Draught strips are included, reversible open in or out. Suitable for use externally but it is essential that complete shelter from direct rain and hot sunshine is provided if appearance and performance is to be maintained. Full treatment with a quality external wood finish is required.

Size (mm)	Product Code
-----------	--------------

94 x 57 single leaf frame **ODF9457**  
Contents per box:  
2 pieces 2100mm,  
1 piece 1050mm, Jamb and Head (including draught strip)  
1 piece 1050mm, 132mm x 28mm Cill,  
1 piece 1050mm, 17mm x 24mm Cill Converter

94 x 57 double leaf frame **ODF9457W**  
Contents per box:  
3 pieces 2100mm, Jamb and Head (including draught strip)  
1 piece 2100mm, 132mm x 28mm Cill,  
1 piece 2100mm, 17mm x 24mm Cill Converter

94 x 68 mullion **OML9468**  
Contents per box:  
1 piece 2100mm Mullion (including draught strip)

## Glossary of Terms

For a more detailed glossary visit [www.jbkind.com](http://www.jbkind.com)

**ARCHITRAVE:** A decorative moulding that surrounds the door, and bridges the gap between the edge of the frame and the wall.

**APERTURE:** An opening in a door where glass would be fitted.

**BEADING:** The mouldings that surround a panel in a solid door, or a pane of glass in a door.

**BESPOKE DOORS:** Doors that are tailor-made to meet individual requirements. Choosing an alternative to the stock doors from the brochure allows clients to request special sizes and alternative designs to match their specific needs.

**CERTIFIRE:** An independent, audited process to ensure that Fire Doors are manufactured to specific standards.

**CORE CONSTRUCTION:** The internal composition of a door.

**FD30 FIRE DOORS:** Doors that have been tested by an accredited test house to ensure that they are able to resist the passage of fire for more than 30 minutes. Likewise, FD60 fire doors will last at least 60 minutes.

**FINISH:** The surface of the door. Doors can be supplied finished, (usually with a clear lacquer), or unfinished/natural (where you are able to apply your own finish).

**FLAT PANEL:** This is a panel on a door which is not raised, bevelled or profiled.

**FRAME:** The timber components (e.g. linings & casings) that are fitted

within a wall opening to which a door is fixed.

**FSC®:** The Forest Stewardship Council is an independent organisation that promotes the responsible management of forests worldwide. The FSC standard is recognised globally.

**HANDING:** Predominantly referring to door pairs, it describes which door in the pair opens first. E.g. RHA (right hand away) or LHA (left hand away)

**INLAY:** A decorative strip, design or pattern which is embedded into the face of the door. Typically the inlay is made of a complementary material or alternative colour to the door, like a veneer or coloured plastic, and it is flush with the door's surface.

**INSERT:** Similar to an inlay but usually slightly thicker and it may not be flush with the door's face (front of the door).

**LIGHT:** This refers to an individual pane of glass within a door e.g. a '2 light' door has two panes of glass.

**LININGS/CASINGS:** Another name for an internal door frame.

**LIPPINGS:** These create the door edge and can be reduced slightly in size to fit a specific door opening, without exposing the inner core of the door. Solid lippings (as long as they are large enough) allow the edges of doors to be modelled to form rebated pairs.

**MULLION:** This is required when fitting an external door with a sidelight.

**PRIMED:** Doors that have been prepared with an undercoat ready for a top coat finish.

**REBATING:** This makes doors into a pair, by machining a groove into the edges of two doors, creating a partial overlap where the doors meet.

**SAFETY GLASS:** Glass that is treated so that, should it break, it does not create sharp shards. All of JB Kind's pre-glazed doors comply with building regulations and meet European standards.

**SEMI-SOLID CORE:** The centre of the door is part solid and part cellular components.

**SIDELIGHT:** A panel which is usually fixed at the side of a hinged door. A sidelight is normally a narrow panel of glass set alongside a larger door.

**SOLID CORE:** A heavy and solid centre to a door, it is normally made from wood-based timber components.

**STANDARD CORE:** Standard core doors have a cellular structure inside the door. This means that the door is lighter in weight than solid or semi-solid core doors and is well suited to domestic use.

**STILE:** This refers to the side of the door. Specific terms are hanging stile (hinge side), leading stile (side that opens into a room) and meeting stile (door pairs).

**VEENEER:** A thin slice of timber used as a decorative material on the visible face of the door.



# Therm-L Exterior



- Oak faced external doors
- Part 'L' compliant
- Prepared ready to finish
- Solid core construction

Distinctive oak faced external doors with environmental credentials. Compliant to Part 'L' of the building regulations, to meet the thermal 'U' (1.8w/m2k) value criteria for new build.

Supplied fitted with insulated glazing units that truly enhance the beauty of the doors. To achieve full thermal insulation properties, the glazed panels have an external face marked upon each door. For this reason, when glass panels are offset, it is necessary to specify left or right as viewed from outside.

Matching sidelights can be reduced from 2057 to 1981mm and 457 to 356mm to fit, if secured in framing. Please note that they are not designed for use as opening doors.

Therm-L Exterior continues overleaf



**LOIRE**  
Shown as right hand (State hand required)  
'U' Value 1.7  
Clear bevelled safety glass

Height	Width	Thickness mm	Product Code
1981	838	44	OTLOI29L-L
1981	838	44	OTLOI29L-R



**BORDEAUX**  
'U' Value 1.6  
Clear bevelled safety glass

Height	Width	Thickness mm	Product Code
1981	762	44	OTBOR26
1981	838	44	OTBOR29
2032	813	44	OTBOR28



**ALSACE**  
Shown as left hand (State hand required)  
'U' Value 1.7  
Clear bevelled safety glass

Height	Width	Thickness mm	Product Code
1981	762	44	OTALS26L-L
1981	762	44	OTALS26L-R
1981	838	44	OTALS29L-L
1981	838	44	OTALS29L-R



**COGNAC**  
'U' Value 1.5

Height	Width	Thickness mm	Product Code
1981	838	44	OTC0629



**RHONE SIDELIGHT**  
'U' Value 1.9  
Clear bevelled safety glass

Height	Width	Thickness mm	Product Code
2057	457	44	OTRH016

**Important**  
Oak is a by-word for strength and durability but this should not be confused with the fact it is most vulnerable and can easily be degraded if constantly exposed to rain or hot sun.  
  
A South/South Westerly elevation facing the prevailing weather is the worst scenario. To preserve the beautiful appearance and to guarantee long, trouble-free service, it is essential to provide adequate shelter from the worst elements of the weather. Position them back from the front face of the building or fit a canopy/open porchway projecting not less than 1.5m.

LOIRE





# Therm-L Exterior continued



Timber veneers are a natural material and variations in the colour and graining should be expected. Colours depicted are representative only.

## THERM-L

PART 'L' COMPLIANT

### Important

Oak is a by-word for strength and durability but this should not be confused with the fact it is most vulnerable and can easily be degraded if constantly exposed to rain or hot sun.

A South/South Westerly elevation facing the prevailing weather is the worst scenario. To preserve the beautiful appearance and to guarantee long, trouble-free service, it is essential to provide adequate shelter from the worst elements of the weather. Position them back from the front face of the building or fit a canopy/open porchway projecting not less than 1.5m.



**ULLSWATER**  
'U' Value 1.7

Height / Width / Thickness mm	Product Code
UNFINISHED	
1981 838 44	<b>OULL29</b>



**WINDERMERE**  
'U' Value 1.7  
Obscure sandblasted glass

Height / Width / Thickness mm	Product Code
UNFINISHED	
1981 838 44	<b>OWIN29</b>



**CONISTON**  
'U' Value 1.7  
Obscure sandblasted glass

Height / Width / Thickness mm	Product Code
UNFINISHED	
1981 838 44	<b>OCON29</b>



**NORFOLK**  
'U' Value 1.5  
Clear glass with black lead camings

Height / Width / Thickness mm	Product Code
UNFINISHED	
1981 838 44	<b>OTNOR29</b>



**BURGUNDY**  
'U' Value 1.7  
Obscure and clear glass with zinc camings

Height / Width / Thickness mm	Product Code
UNFINISHED	
1981 838 44	<b>OTBUR29</b>



**MOSEL**  
'U' Value 1.5  
Obscure and clear glass with zinc camings

Height / Width / Thickness mm	Product Code
UNFINISHED	
1981 838 44	<b>OTMOS29</b>



**PIEDMONT SIDELIGHT**  
'U' Value 1.9  
Obscure and clear glass with zinc camings

Height / Width / Thickness mm	Product Code
UNFINISHED	
2057 457 44	<b>OTPIE16</b>



**RIOJA**  
'U' Value 1.7  
Obscure and clear glass with zinc camings

Height / Width / Thickness mm	Product Code
UNFINISHED	
1981 838 44	<b>OTRIO29</b>



# Essential Door Care & Maintenance Advice

The principal enemy of timber doors is excess exposure to moisture or dryness. Having left our custody, we have no control over the conditions to which they are subjected and to avoid any subsequent cause for disappointment, we strongly advise the following advice is heeded. If suitable care and treatment is not taken, stresses within wood may be released, resulting in movement or distortion such as swelling, warping, splitting or even discolouration. No liability will be accepted when problems are moisture related.

## Storage

On receipt please store laid flat, fully supported off the floor with at least three full width bearers of the same dimension in a dry fully ventilated area, with protective packaging intact. Doors supplied unfinished should be thoroughly sealed on all faces and edges prior to the commencement of any joinery work, although first sizing them may be to advantage.

## Wood finishes

There are numerous brands on the market and we fear many are formulated to achieve a low market price rather than quality. Be sure to select one to provide a lasting seal between component parts. Avoid the use of water based finishes, using only good quality solvent based finishes that have recognised sealing properties, ensuring that it is fit for purpose for the situation and conditions in which your door is to be fitted.

Follow the manufacturer's instructions carefully and we recommend keeping a copy of the claims made for the product in the event it fails to perform. It is vital

all finishing systems are applied equally to both sides and edges at the same time. Rapid changes in ambient moisture are extremely detrimental especially when unbalanced.

Danish oil is not suitable for use as a finish on any of our products. The application of a base coat stain or a paint primer alone is not deemed to form a seal.

## Installation

When trimming doors, reduce them equally and not excessively from the top and bottom for height, to the hanging edge only for the width, if minimal, but equally with the meeting edge if a greater amount is necessary. Please note our FD30 fire doors have individual limitations in this respect and these cannot be exceeded.

Recesses for hinges (3 No. 75mm internal, 3 No. 100mm external) and mortises for latch / locks etc. should be cut to the minimum recommended sizes. Panel door mortises should not be located at rail joints as this may significantly weaken them. On completion remove doors, taking off all ironmongery and treat every cut / untreated surface liberally with a number of coats before finally refitting, giving particular attention to all exposed end grain where the propensity for ingress / egress of moisture is far greater.

## Internal door specific

We strongly advise against the installation of all types of timber doors into a building with recent plastered or screeded areas. Wet sites with enclosed unheated buildings represent extremely detrimental environments and must be

thoroughly dry, without condensation, before doors are introduced. Even our pre-finished doors should not be exposed to inappropriate damp site conditions.

## External door specific

Even in times past, it was never advisable or intended that timber entrance doors be fully exposed to the worst elements of our climate, even if well coated. A South / South Westerly elevation is the worst direction for the prevailing weather and exposure to the hottest sun which can seriously degrade external doors.

We recommend they are set back from the front face of the building or covered by a canopy or porch way projecting not less than about 1.5m, regardless of elevation. Always fit with a suitable weatherboard regardless of frame cill type fitted, to prevent droplets of moisture hanging from the door bottom.

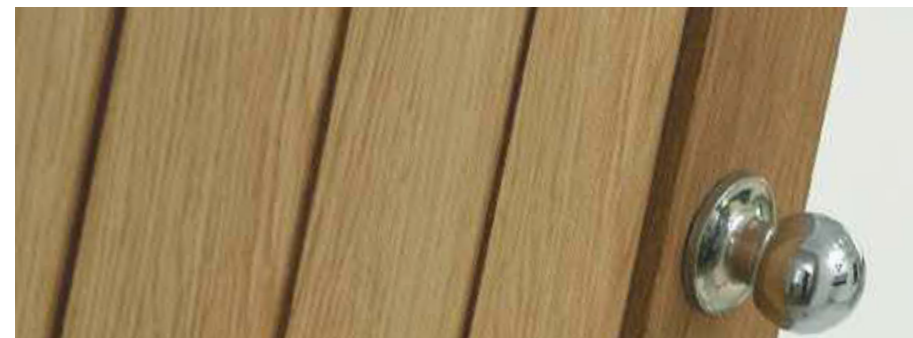
Future maintenance is most important to retain good appearance over many years and we recommend washing down with warm water and detergent every two to three years and re-coating.

## Quality standards

All external and internal doors are supplied in accordance with BS EN 942:2007 "Timber in Joinery General Classification of Timber Quality", BS 5278:1976/EN25:1975 "Doors measurement of Dimensions and of Defects of Squareness of Door Leaves" and BS EN 951:1999 "Door leaves. Method for measurement of height, width, thickness and squareness".

Any claims against warranty relating to manufacture will be assessed strictly in accordance with the criteria contained within.

Any claims against warranty relating to storage, handling or installation of any of our doors will be assessed against guidelines contained within BS8000 part 5:1990 and British Standard Code of Practice CP151. JB Kind Terms and Conditions of Trading apply.



## Safety Glass

To comply with building regulations all our pre-glazed doors meet the requirements of the European standards.

Wood is a natural material and variations in colour should be expected. Colours depicted are representative only and are reproduced as accurately as the printing process will allow. We reserve the right to make alterations or modify specifications without notice. Errors and omissions excepted.

# Bespoke Options

Whether you're self-building, renovating your home, purchasing for a development project or you're an interior design expert, you'll want to take a look at JB Kind's bespoke options. The versatility of our bespoke service is ideal for those special requirements.

## Timber Veneers & Painted Finishes

Perhaps you love one of the designs from our Door Collection but would prefer it in a different timber veneer or painted finish, or perhaps you would like to create a style that is completely unique and different? Here are some examples of just a few timber veneers and painted finishes that are available – more can be viewed online at [jbkind.com](http://jbkind.com).



And don't forget – you can always mix different veneers together.



## Let there be light

Whether you prefer a full glazed panel or smaller apertures, there are so many options for a glazed door. Clear, bevelled, diamond cut and etched are some of the most popular glazing types. Let us know what you would like to achieve and we'll advise on the options.



## Made to Measure: Individually tailored doors

There are a wide range of standard door sizes available, however, sometimes you just cannot avoid an awkwardly sized door opening. Many of the doors from our collection can be produced to order as a special size and of course any door designs that are created just for you. Call us to discuss your requirements.

## Fire doors

JB Kind can supply bespoke fire doors, in a wide range of solid and glazed options. Supported by the appropriate accreditations, you can be safe and stylish.

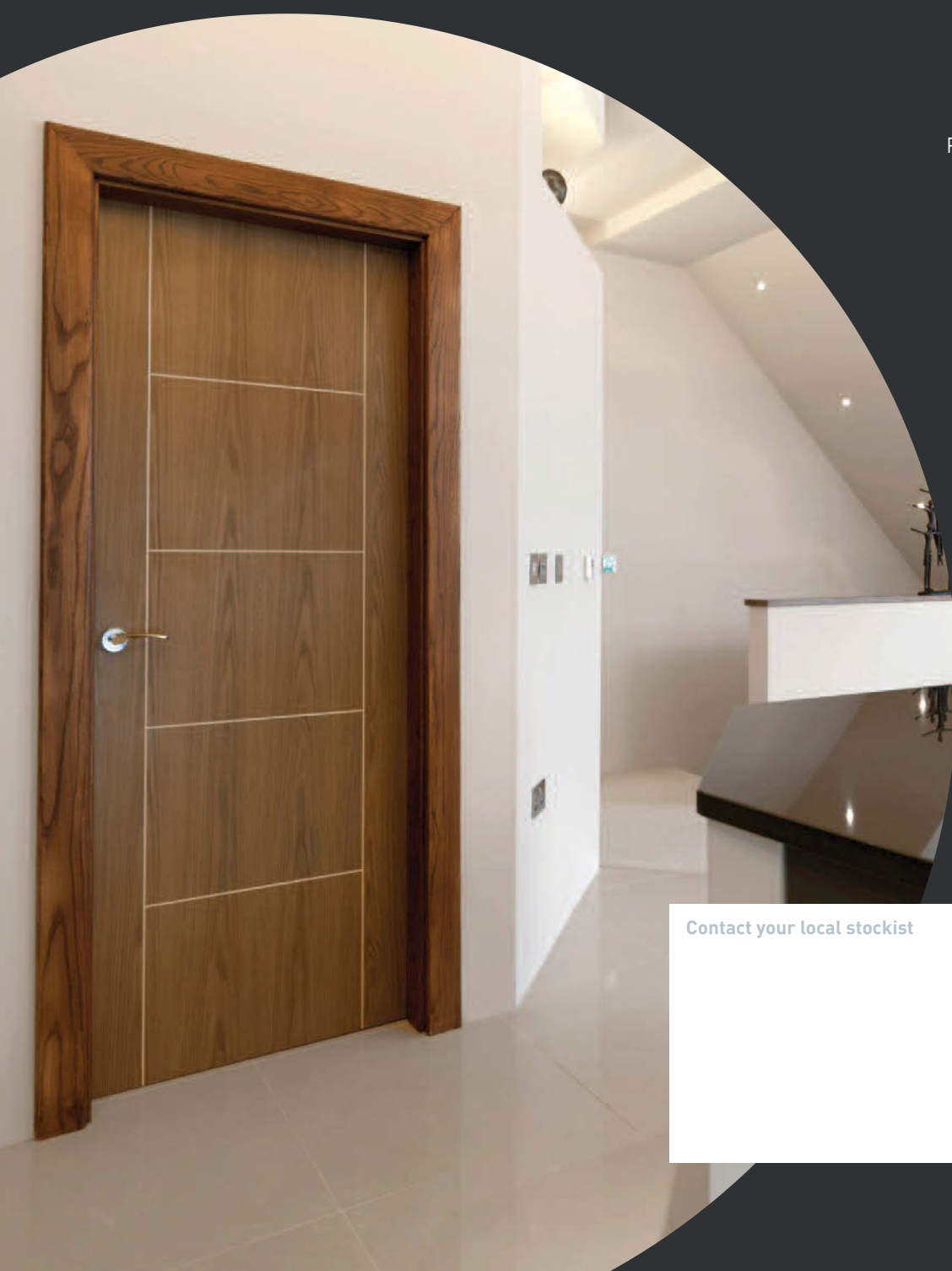
For lots more information on the bespoke options that are available, visit [jbkind.com](http://jbkind.com) or talk to us, we are here to help.





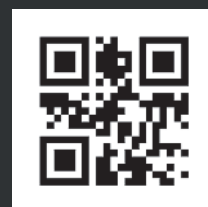
INSPIRATIONAL DOORS.  
**Undeniable value.**

[www.jbkind.com](http://www.jbkind.com)



JB Kind Limited  
Portal Place, Astron Business Park  
Hearthcote Road, Swadlincote,  
Derbyshire DE11 9DW  
T: **01283 554197**  
F: 01283 554182  
E: [info@jbkind.com](mailto:info@jbkind.com)

Scan with your  
smartphone



Contact your local stockist

